



capital equipment

WAREWASHING

REFRIGERATION

PREPARATION

COOKING APPLIANCES

BEVERAGE

HEATED DISPLAY

CHILLED DISPLAY

FLY KILLERS

ASIAN COOKLINE

Glass & Dishwashers

GS Range Glasswashers

- Easy to use soft touch controls
- Three cycle time selection
- Includes 2 open baskets
- Self cleaning jets with easily removable wash and rinse arms
- 240V single, 501GS can be three phase
- 401GS and 451GS are 13 amp, 501GS can be 13/20/30 amp supply
- 440mm(W) x 540mm(D) x 675mm(H)* - 401GS
- 530mm(W) x 560mm(D) x 700mm(H)* - 451GS
- 580mm(W) x 610mm(D) x 815mm(H)* - 501GS



* Height is excluding feet.
(Feet to add 10 to 20mm)

50324	401GS 390mm baskets	£1,150.00
51013	401GSD 390mm baskets inc. drain pump	£1,305.00
50325	451GS 450mm baskets	£1,440.00
51014	451GSD 450mm baskets inc. drain pump	£1,545.00
50326	501GS 500mm baskets	£1,795.00
51015A	501GSD 500mm baskets inc. drain pump	£1,840.00

Evolution Range Glasswashers

- Water and energy efficient
- Display and user interface with LCD display
- Extensive range of special cycle options and simple machine status updates
- Includes 2 open baskets
- Drain pump standard on all models
- 240V single phase, 501 and 505WS can be three phase
- 401 and 405WS are 13 amp supply, 501 and 505WS can be 13/20/30 amp supply
- WRAS approved break tank
- 470mm(W) x 460mm(D) x 700mm(H)* - 401 and 405WS
- 600mm(W) x 605mm(D) x 715mm(H)* - 501 and 505WS



* Height is excluding feet.

50893	Evo401 400mm baskets	£1,949.00
56626	Evo405WS 400mm baskets inc. water softener	£2,130.00
50101	Evo501 500mm baskets	£2,135.00
50726	Evo505WS 500mm baskets inc. water softener	£2,372.00

GS Range Dishwashers

- Easy to use soft touch controls
- Three cycle time selection
- Includes 1 open basket, 1 plate basket
- Self cleaning jets with easily removable wash and rinse arms
- 240V single or three phase
- 13/20/30 amp supply
- WRAS approved break tank
- 580mm(W) x 610mm(D) x 815mm(H)*



* Height is excluding feet.
(Feet to add 10 to 20mm)

50327	511GS 500mm baskets	£1,975.00
51016A	511GSD 500mm baskets inc. drain pump	£2,085.00
97400	515GS 500mm baskets inc. internal water softener & drain pump	£2,275.00

Evolution Range Dishwashers

- Water and energy efficient
- Display and user interface with LCD display
- Extensive range of special cycle options and simple machine status updates
- Includes 1 open basket, 1 plate basket
- Drain pump standard on all models
- 240V single or three phase
- 13/20/30 amp supply
- WRAS approved break tank
- 600mm(W) x 605mm(D) x 815mm(H)*



* Height is excluding feet.

40571	Evo511 500mm baskets	£2,260.00
40572	Evo515WS 500mm baskets inc. water softener	£2,630.00

GS Range Pass Through Dishwashers



- Easy to use soft touch controls
- Three cycle time selection
- Includes 1 open basket, 1 plate basket
- Self cleaning jets with easily removable wash and rinse arms
- 240V single or three phase
- 20/30 amp supply
- WRAS approved break tank
- 745mm(W) x 810mm(D) x 1455-1510mm(H)*

Tabling not included.

* Height with hood closed and excluding feet.
(Feet to add 10 to 20mm)
*Width including handle

50333	111GS 500mm baskets	£2,995.00
51017A	111GSD 500mm baskets inc. drain pump	£3,060.00
97401	115GS 500mm baskets inc. drain pump & internal water softener	£3,450.00

Evolution Range Pass Through Dishwashers



Tabling not included.

- Water and energy efficient
- Display and user interface with LCD display
- Extensive range of special cycle options and simple machine status updates
- Includes 1 open basket, 1 plate basket
- Drain pump standard on all models
- 240V single or three phase
- 20/30 amp supply
- WRAS approved break tank
- 640mm(W) x 755mm(D) x 1540mm(H)*

80320	Evo2021 500mm baskets	£3,750.00
80366	Evo2035WS 500mm baskets inc. water softener	£3,950.00

* Height with hood closed and excluding feet.

WAREWASHING

REFRIGERATION

PREPARATION

COOKING APPLIANCES

BEVERAGE

HEATED DISPLAY

CHILLED DISPLAY

FLY KILLERS

ASIAN COOKLINE



warewashing

Right machine. Right price.

23 undercounter warewashing machines

24 pass through warewashing machines

+ comprehensive icemaker range

+ espresso coffee machine range



Warewashing Racks



Polirack Standard Open Rack



50322 385mm 1 £32.00
50158 450mm 1 £20.00
23333 500mm 1 £12.00

Polirack Standard Cutlery Rack



23334 500mm 1 £17.00

Polirack Standard Pegged Plate Basket



50775 500mm 1 £17.00

Polirack Standard Pegged Tray Basket



24309 500mm 1 £12.00

Polirack Standard Divider Extender 500mm



29891 9 Section 1 £8.00
29900 16 Section 1 £9.00
20001 25 Section 1 £11.00
20012 36 Section 1 £13.50
20163 49 Section 1 £8.50

Polirack Standard Extender 500mm x 40mm Height



24142 Extender 1 £6.00

Polirack Drip Tray



23329 520mm 1 £12.50

Polirack Base Dividers 500mm



24323 9 Section 1 £8.50
24339 16 Section 1 £12.00
51253A 25 Section 1 £5.00
26932 36 Section 1 £8.50
27299 49 Section 1 £8.50

Polirack Cutlery Basket



23335
8 Section
1 £12.50

Polirack Cutlery Insert Round



51283A
Cutlery Round
1 £1.30

Polirack Cutlery Insert Square



20437
Cutlery Square
1 £1.30

Polirack Rack Trolley

80534 With Handle 1 £75.00
20238 Without Handle 1 £59.00



Polirack Protective Cover PVC

93019
915mm
1 £40.00
93020
1219mm
1 £67.00



Icon key ■ Quantity

WAREWASHING

REFRIGERATION

PREPARATION

COOKING APPLIANCES

BEVERAGE

HEATED DISPLAY

CHILLED DISPLAY

FLY KILLERS

ASIAN COOKLINE

Warewashing Racks



9 Section 14.9cm Square Black Camrack



90025	Height: 9.2cm	1	£30.85
90027	Height: 13.3cm	1	£40.24
58723	Height: 17.4cm	1	£48.03
58724	Height: 21.5cm	1	£58.40
58725	Height: 25.7cm	1	£67.71
58726	Height: 29.8cm	1	£78.85

16 Section 11.11cm Square Green Camrack



58685	Height: 9.2cm	1	£30.85
58675	Height: 11.4cm	1	£32.32
58676	Height: 13.3cm	1	£40.44
58677	Height: 15.5cm	1	£41.40
58678	Height: 17.4cm	1	£48.53
58679	Height: 19.6cm	1	£49.55

90175	Height: 21.5cm	1	£58.60
58680	Height: 23.8cm	1	£59.64
58681	Height: 25.7cm	1	£67.71
58682	Height: 27.9cm	1	£68.75
58683	Height: 29.8cm	1	£78.85
58684	Height: 32cm	1	£79.81

20 Section 9.84cm Square Grey Camrack



90022	Height: 9.2cm	1	£30.85
58688	Height: 13.3cm	1	£40.95
58689	Height: 17.4cm	1	£48.99
58690	Height: 21.5cm	1	£58.60
90231D	Height: 25.7cm	1	£67.71
58691	Height: 29.8cm	1	£78.85

25 Section 8.7cm Square Red Camrack



58698	Height: 9.2cm	1	£30.85
58692	Height: 11.4cm	1	£33.39
90257	Height: 13.3cm	1	£40.95
58693	Height: 15.5cm	1	£42.95
90245	Height: 17.4cm	1	£48.99
90249	Height: 19.6cm	1	£52.99

90222	Height: 21.5cm	1	£58.60
58694	Height: 23.8cm	1	£63.68
90248	Height: 25.7cm	1	£67.71
58695	Height: 27.9cm	1	£73.75
58696	Height: 29.8cm	1	£78.85
58697	Height: 32cm	1	£84.85

30 Section 7.94cm Square Brown Camrack



58704	Height: 9.2cm	1	£32.32
58699	Height: 13.3cm	1	£41.40
58700	Height: 17.4cm	1	£49.95
58701	Height: 21.5cm	1	£59.64
58702	Height: 25.7cm	1	£69.75
58703	Height: 29.8cm	1	£78.85

36 Section 7.3cm Square Blue Camrack



58716	Height: 9.2cm	1	£32.32
58705	Height: 11.4cm	1	£34.85
58706	Height: 13.3cm	1	£41.40
58707	Height: 15.5cm	1	£44.95
58708	Height: 17.4cm	1	£49.95
58709	Height: 19.6cm	1	£55.53

58710	Height: 21.5cm	1	£59.64
58711	Height: 23.8cm	1	£66.21
58712	Height: 25.7cm	1	£69.75
58713	Height: 27.9cm	1	£76.31
58714	Height: 29.8cm	1	£78.85
58715	Height: 32cm	1	£86.47

49 Section 6.2cm Square Beige Camrack



58722	Height: 9.2cm	1	£32.83
58717	Height: 13.3cm	1	£42.41
58718	Height: 17.4cm	1	£51.04
58719	Height: 21.5cm	1	£59.64
58720	Height: 25.7cm	1	£70.76
58721	Height: 29.8cm	1	£81.87

16 Section 11.1x10.95cm Grey Cup Camrack



58687	Height: 6.6cm	1	£21.95
90213	Height: 10.7cm	1	£30.57
58686	Height: 14.9cm	1	£45.68

For best prices call
our sales team on
0845 130 9070

WAREWASHING

REFRIGERATION

PREPARATION

COOKING APPLIANCES

BEVERAGE

HEATED DISPLAY

CHILLED DISPLAY

FLY KILLERS

ASIAN COOKLINE

20 Section 11.1x8.73cm
Grey Cup Camrack

90125
Height: 6.6cm
1 £22.76
90016
Height: 10.7cm
1 £31.31



Full Camrack
Cover Grey

32570
50x50x2.4cm
1 £31.33



Camdolly Grey

90239
53x53cm
1 £109.67



Camdolly with
Handle Grey

90238
53x53cm
1 £205.33



Full Base Camrack Green

58729
8.3cm
1 £18.85



Full Base Camrack with
1 Extender Grey

58727
12.4cm
1 £29.33



Full Base Camrack with
2 Extender Beige

58728
16.5cm
1 £37.59



Full Base Camrack with
3 Extender Blue

90237
20.6cm
1 £46.16



Peg Camrack Grey

58731
5x9cm
Height: 8.3cm
1 £20.33
58733
9x9cm Height: 8.3cm
1 £20.33



Peg Camrack with 1 Extender Grey

58730
5x9cm
Height: 12.4cm
1 £30.85
58732
9x9cm Height: 12.4cm
1 £30.85



Full Flatware Camrack Grey

90235
Height: 6.7cm
1 £20.33



WAREWASHING

REFRIGERATION

PREPARATION

COOKING APPLIANCES

BEVERAGE

HEATED DISPLAY

CHILLED DISPLAY

FLY KILLERS

ASIAN COOKLINE



The UK's largest independent company for **installation** and **servicing** of all makes of **commercial glasswashers** & **dishwashers**

Crystaltech has a proven track record of responding to "Out of Hours" calls and an excellent first time fix rate, to ensure that essential warewashing equipment is fully operational with the minimum downtime.

Crystaltech's nationwide service and installation vans are all fully equipped



Book a service call on
0870 350 2424

9.00am - 5.00pm, Mon-Fri • 9.00am - 1.00pm, Sat

Water Softeners



Manual Water Softeners

Diameter: 185mm, min water temp: 4°C, max water temp: 50°C, min water pressure: 1.7 bar, max water pressure: 8 bar, connections BSP 3/4" male

32521	8Ltr	1	£80.00
32508	12Ltr	1	£90.00
50078	16Ltr	1	£126.00



Automatic Water Softener

Automatic salt regenerated scale control ideal for establishments that have difficulty in controlling the task of manual generation. Regeneration controlled by time switch, usually set to generate nightly. The frequency of salt top up required is dependant upon water hardness and water throughput. 230V 13 amp supply min 2 bar, 3/4" BP connection. Supply temperature range on cold units 5°C to 50°C.



80017	Cold 1400Ltr	1	£495.00
-------	--------------	---	---------

Machine Stands



Adjustable Black Powder Coated Stand

Depth and width of stands can be extended from 390mm to 640mm. Maximum height is 520mm, extra tall stand is 710mm. Leg stands can be cut to reduce height. Feet are adjustable for leveling. (All stands are supplied flat pack for self assembly.)



50082	Standard	1	£45.00
50161	Extra Tall	1	£49.00

Mobile Racking



3 Tier Mobile Racking

Flat pack 3 tier racking for 500mm baskets with castors and trays. Height: 850mm



80455	500mm	1	£225.00
-------	-------	---	---------

WAREWASHING

REFRIGERATION

PREPARATION

COOKING APPLIANCES

BEVERAGE

HEATED DISPLAY

CHILLED DISPLAY

FLY KILLERS

ASIAN COOKLINE

Warewashing Chemicals



Maidaid
Crystal 3000
Glasswash



60572
2 x 5ltr
£17.50

Maidaid
Premium
Dishwash



60169
2 x 5ltr
£15.50

Maidaid
Premier
Dishwash



38280
1 x 20ltr
£34.50

Maidaid
Glass
Renovator



62072
2 x 5ltr
£20.50

Maidaid
Machine
Descaler



39450
2 x 5ltr
£25.00

Maidaid
Rinse Aid



38281
2 x 5ltr
£17.50

Maidaid
Dishwasher
Rinse Aid



39451
1 x 20ltr
£34.00

Salt
Tablets



60403
1 x 25kg
£12.50

Call for more details on our
**minirack
machines**



Call for more details on our
pot washers



Call for more details on our
flight machines



**Grey
SIMMONDS**

0845 130 9070
sales@greysimmonds.co.uk

WAREWASHING

REFRIGERATION

PREPARATION

COOKING APPLIANCES

BEVERAGE

HEATED DISPLAY

CHILLED DISPLAY

FLY KILLERS

ASIAN COOKLINE

Upright Refrigeration

Refrigerated Cabinet Single Door



- Heavy duty, general purpose
- S/Steel exterior and interior
- Temp. range: +1°C / +10°C - Fridge
- Temp. range: -18°C / -22°C - Freezer
- 4 x 2/1 GN shelves
- Automatic vaporisation of condensate
- 654ltr/23cu.ft capacity
- 720mm(W) x 865mm(D) x 2115mm(H) - Fridge
- 720mm(W) x 865mm(D) x 2150mm(H) - Freezer

80397 Fridge CA170 £1,155.00

80391 Freezer CB170 £1,409.00

Refrigerated Cabinet Double Door



- Heavy duty, general purpose
- S/Steel exterior and interior
- Temp. range: +1°C / +10°C - Fridge
- Temp. range: -18°C / -22°C - Freezer
- 4 x 2/1 GN shelves per door
- Automatic vaporisation of condensate
- 1432ltr/50.5cu.ft capacity
- 1440mm(W) x 865mm(D) x 2115mm(H)

10988 Fridge CE2140 £1,689.00

10904 Freezer CF2140 £1,979.00

Compact Refrigerated Cabinet Single Door



- Right hand hinged reversible door with lock
- S/Steel exterior with ABS lining interior
- Temp. range: +2°C / +12°C - Fridge
- Temp. range: -22°C / -5°C - Freezer
- 6 Shelves 265ltr/9cu.ft capacity
- 595mm(W) x 640mm(D) x 1900mm(H)

80379 Fridge K410 RG £865.00

10975 Freezer F410 RG £910.00

Refrigerated Cabinet Single Door



- Heavy duty, general purpose
- S/Steel solid door and front
- Temp. range: 0°C / +3°C - Fridge
- Temp. range: -18°C / -23°C - Freezer
- 4 x 2/1 GN shelves
- Automatic vaporisation of condensate
- 651ltr/23cu.ft capacity
- 686mm(W) x 750mm(D) x 2074mm(H)

10359 Fridge T-23 £1,315.00

10797 Freezer T-23F £1,829.00

Refrigerated Cabinet Single Door



- Economical in its energy use and design
- S/Steel exterior and interior
- Temp. range: +2°C / +8°C - Fridge
- Temp. range: -22°C / -10°C - Freezer
- Right hand hinged door with lock
- 3 x 2/1 GN shelves
- 594ltr/21 cu.ft capacity
- 695mm(W) x 855mm(D) x 2000mm(H)

80475 Fridge K605 £1,009.00

80476 Freezer F605 £1,135.00

Refrigerated Cabinet Double Door



- Economical in its energy use and design
- S/Steel exterior and interior
- Temp. range: +2°C / +8°C - Fridge
- Temp. range: -22°C / -10°C - Freezer
- 3 x 2/1 GN shelves per door
- 1300ltr/46cu.ft capacity
- 1390mm(W) x 855mm(D) x 2000mm(H)

80477 Fridge K1305 £1,599.00

80478 Freezer F1305 £1,775.00

EcoPro Refrigerated Cabinet Single Door



- Touch sensitive control panel
- S/Steel exterior and interior
- Temp. range: +1°C / +4°C - Fridge
- Temp. range: -18°C / -21°C - Freezer
- Ergonomic door and handle design
- 3 x 2/1 GN shelves
- 600ltr/21cu.ft capacity
- 700mm(W) x 820mm(D) x 2080mm(H)

80546 Fridge EP700H £2,029.00

10216 Freezer EP700L £2,470.00

Jade Refrigerated Cabinet Single Door



- Full length easy grab door handle
- S/Steel exterior, aluminium interior
- Temp. range: +1°C / +4°C - Fridge
- Temp. range: -18°C / -22°C - Freezer
- 3 x 2/1 GN shelves
- 595ltr/21cu.ft capacity
- 737mm(W) x 824mm(D) x 1960mm(H)

10356 Fridge HJ1-SA £1,219.00

80479 Freezer FJ1-SA £1,509.00

For more information visit our website

www.greysimmonds.co.uk

WAREWASHING

REFRIGERATION

PREPARATION

COOKING APPLIANCES

BEVERAGE

HEATED DISPLAY

CHILLED DISPLAY

FLY KILLERS

ASIAN COOKLINE

Undercounter Gastronorm Refrigeration

Fridge/Freezer Gastronorm Counters

- Available in 2, 3 or 4 door
- S/Steel interior and exterior
- Temp. range: +2°C / +8°C - Fridges
- Temp. range: -18°C / -22°C - Freezers
- 1 x 1/1 GN shelf per door
- 1360mm(W) x 700mm(D) x 850mm(H) - 2 Door
- 1795mm(W) x 700mm(D) x 850mm(H) - 3 Door
- 2230mm(W) x 700mm(D) x 850mm(H) - 4 Door



- Blizzard**
- 93118** 2 Door Fridge HBC2 £799.00
 - 51224** 3 Door Fridge HBC3 £936.00
 - 93119** 4 Door Fridge HBC4 £1,085.00
 - 93125** 2 Door Freezer LBC2 £939.00
 - 93126** 3 Door Freezer LBC3 £1,039.00
 - 93127** 4 Door Freezer LBC4 £1,210.00

Refrigerated Gastronorm Counters

- Available in 2, 3 or 4 door
- S/Steel interior and exterior
- Temp. range: +1°C / +10°C
- 1 x 1/1 GN shelf per door
- 1345mm(W) x 700mm(D) x 885mm(H) - 2 Door
- 1790mm(W) x 700mm(D) x 885mm(H) - 3 Door
- 2240mm(W) x 700mm(D) x 885mm(H) - 4 Door



- 93128** 2 Door PN99 £1,075.00
- 93129** 3 Door PN999 £1,231.00
- 93130** 4 Door PN9999 £1,460.00

Compact Refrigerated Gastronorm Counters

- Available in 2 or 3 door
- S/Steel interior and exterior
- Temp. range: +2°C / +8°C
- 1 x 1/1 GN shelf per door
- 900mm(W) x 700mm(D) x 870mm(H) - 2 Door
- 1365mm(W) x 700mm(D) x 870mm(H) - 3 Door



- 50862** 2 Door BCC2 £599.00
- 93113** 3 Door BCC3 £709.00

Compact Refrigerated Gastronorm Counters with Drawers

- Available with 2, 4 or 6 drawers
- S/Steel interior and exterior
- Temp. range: +2°C / +8°C
- 1 x 1/1 GN shelf per door
- 900mm(W) x 700mm(D) x 870mm(H) - 2 and 4 Drawer
- 1365mm(W) x 700mm(D) x 870mm(H) - 6 Drawer



- Blizzard**
- 93111** 2 Drawers BCC2-2D £729.00
 - 93112** 4 Drawers BCC2-4D £899.00
 - 93114** 6 Drawers BCC3-6D £1,239.00

Refrigerated Gastronorm Counters

- Available in 2, 3 or 4 door
- S/Steel interior and exterior
- Temp. range: -2°C / +4°C
- 1 x 2/3 GN shelf per door
- 1345mm(W) x 520mm(D) x 865mm(H) - 2 Door
- 1805mm(W) x 520mm(D) x 865mm(H) - 3 Door
- 2265mm(W) x 520mm(D) x 865mm(H) - 4 Door



- precision**
- 51287** 2 Door MCU223SS £1,732.00
 - 6508** 3 Door MCU323SS £2,019.00
 - 80480** 4 Door MCU423SS £2,330.00

Refrigerated Gastronorm Counters

- Available in 2, 3 or 4 door
- S/Steel interior and exterior
- Temp. range: -2°C / +8°C
- 2 x 1/1 GN shelves per door
- 1182mm(W) x 700mm(D) x 855mm(H) - 2 Door
- 1633mm(W) x 700mm(D) x 855mm(H) - 3 Door
- 2084mm(W) x 700mm(D) x 855mm(H) - 4 Door



- Grow**
- 10976** 2 Door K1205 £1,239.00
 - 10977** 3 Door K1605 £1,415.00
 - 80474** 4 Door K2005 £1,775.00

WAREWASHING

REFRIGERATION

PREPARATION

COOKING APPLIANCES

BEVERAGE

HEATED DISPLAY

CHILLED DISPLAY

FLY KILLERS

ASIAN COOKLINE

Undercounter Gastronorm Refrigeration

Jade Refrigerated Gastronorm Counters



- Available in 2, 3 or 4 door
- S/Steel interior and exterior
- Temp. range: +1°C / +4°C
- 2 x 1/1 GN shelves per door
- 1370mm(W) x 659mm(D) x 860mm(H) - 2 Door
- 1835mm(W) x 659mm(D) x 860mm(H) - 3 Door
- 2300mm(W) x 659mm(D) x 860mm(H) - 4 Door



10741
2 Door HJC2
£1,699.00

80376
3 Door HJC3
£1,960.00

10423
4 Door HJC4
£2,335.00



EcoPro Refrigerated Gastronorm Counters



- Available in 2, 3 or 4 door
- S/Steel exterior, aluminium interior
- Temp. range: +1°C / +4°C
- 2 x 1/1 GN shelves per door
- 1415mm(W) x 700mm(D) x 865mm(H) - 2 Door
- 1865mm(W) x 700mm(D) x 865mm(H) - 3 Door
- 2320mm(W) x 700mm(D) x 865mm(H) - 4 Door



10140
2 Door EP1/2H
£2,169.00

10655
3 Door EP1/3H
£2,485.00

65248
4 Door EP1/4H
£2,894.00



Undercounter Refrigeration

S/Steel Undercounter Refrigeration



- 304 Grade S/Steel exterior, ABS interior
- Temp. range: +2°C / +8°C - Fridge
- Temp. range: -16°C / -24°C - Freezer
- Height adjustable from 820-850mm
- Replaceable gasket
- 140ltr/5cu.ft capacity
- 595mm(W) x 595mm(D) x 820mm(H)



50770 Fridge UCR140 £419.00

50771 Freezer UCF140 £419.00

Hydrocarbon Undercounter Refrigeration



- S/steel front and countertop, matching aluminium sides and finished back
- Temp. range: +0.5°C / +3.3°C - Fridge
- Temp. range: -23.3°C - Freezer
- Attractive white aluminium liner, 2 Shelves
- Front ventilation
- 147ltr/5.2cu.ft capacity
- 610mm(W) x 628mm(D) x 831mm(H)



10713
Fridge TUC-24
£915.00

10663
Freezer TUC-24F
£1,315.00

Chest Freezers

Commercial White Chest Freezer



- Anti-corrosion painted plate exterior
- Temp. range: -18°C / -22°C
- Aluminium interior
- Internal illumination
- Digital thermometer
- Depth including handle 650mm
- 481ltr/17cu.ft capacity
- 1560mm(W) x 600mm(D) x 1560mm(H)



50743 Chest Freezer SZ464C £465.00

White Chest Freezer



- Control panel with light, thermometer and quick freeze switch
- Temp. range: -18°C / -21°C
- Four one way roller castors
- White laminated exterior with s/steel lid and aluminium interior
- 371ltr/13cu.ft capacity
- 1304mm(W) x 720mm(D) x 845mm(H)



80463 Chest Freezer FCF400LX £699.00

Blast Chillers

Blast Chiller/Freezer



- S/Steel interior and exterior
- Blast chill cycle +70 to +3°C in 90 minutes
- Blast freeze cycle +70 to -18°C in 240 minutes
- Accepts 1/1 GN trays or 600 x 400mm shelves
- Right hand hinged door
- 5 x 1/1 GN capacity
- 800mm(W) x 800mm(D) x 930mm(H)



93115
Blast Chiller BCF20
£1,719.00

Blast Chiller/Freezer



- S/steel interior and exterior
- Also available in smaller sizes
- Capable of Blast Chilling from +70°C to +3°C in 90 minutes
- Freezing capacity from +70°C to -18°C in less than 240 minutes
- 5 x 1/1 GN capacity - BCFT15, 10 x 1/1 GN capacity - BCFT38
- 755mm(W) x 690mm(D) x 890mm(H) - BFT15
- 755mm(W) x 690mm(D) x 1515mm(H) - BFT38



80439
Blast Chiller BFT15
£3,409.00
80438
Blast Chiller BFT38
£5,250.00

Blast Chiller/Freezer



- Available in 20kg or 40kg
- S/steel interior and exterior
- 20kg from +70 to +3°C in 90 minutes
- 12kg from +70 to -18°C in 4 hours
- Table top control panel, right hand hinged door
- 5 x 1/1 GN capacity - SKF20, 10 x 1/1 GN capacity - SKF40
- 745mm(W) x 700mm(D) x 1000mm(H) - SKF20
- 800mm(W) x 830mm(D) x 1750mm(H) - SKF40



80484 Blast Chiller SKF20 £2,839.00
80485 Blast Chiller SKF40 £4,375.00

Fish Keepers

Blizzard Fish Keepers



- Available in 4, 6 or 8 drawer
- S/steel interior and exterior
- Temp. range: -1°C / +2°C
- Drawers include drain plate
- Drawer size -100 x 565 x 375mm
- 690mm(W) x 635mm(D) x 920mm(H) - 4
- 690mm(W) x 635mm(D) x 1180mm(H) - 6
- 690mm(W) x 635mm(D) x 1430mm(H) - 8

93108
4 Drawer BF10
£1,674.00
93109
6 Drawer BF15
£1,884.00
93110
8 Drawer BF20
£2,067.00

Chef Bases

Refrigerated Chef Base



- S/steel front, top and sides
- Temp. range: +0.5°C / +3.3°C
- 3 x 1/1 GN pans per drawer
- 2 drawers
- Environmentally friendly forced air refrigeration
- 1318mm(W) x 816mm(D) x 645mm(H)



10689
Chef Base TRCB-52
£2,449.00

Chef Base Unit with Heat Shield Worktop



- 1 Drawer
- Temp. range: -22°C / +15°C
- Free standing side engine
- 52mm heat shield worktop as standard
- 4 x 1/1 GN pan capacity
- 1100mm(W) x 700mm(D) x 616mm(H)



10997
Chef Base Heat Shield VCS1/HCHS
£2,450.00

WAREWASHING

REFRIGERATION

PREPARATION

COOKING APPLIANCES

BEVERAGE

HEATED DISPLAY

CHILLED DISPLAY

FLY KILLERS

ASIAN COOKLINE

Variable Temperature Drawers

Variable Temperature Drawers

precision



- S/steel interior and exterior
- Stackable units
- Ultra low energy consumption
- -22°C / +5°C variable temperature
- Each drawer is capable of holding any combination of gastronorm pans up to a 200mm deep 2/1 GN pan
- Castors and worktops available
- 1100mm(W) x 675mm(D) x 385mm(H)



11001
Variable Temp. VSS121SS
£1,670.00

Refrigerated Prep Counters

Compact Refrigerated Prep Counters

Blizzard

- Available in 2 or 3 door
- S/steel interior and exterior
- Temp. range: +2°C / +8°C
- 1 x 1/1 GN shelf per door
- Raised collar accepts 1/6 GN containers max 150mm deep
- Replaceable gaskets
- 900mm(W) x 700mm(D) x 970mm(H) - 2 Door
- 1365mm(W) x 700mm(D) x 970mm(H) - 3 Door

51182
Compact 2 Door BCC2EN
£699.00
50848
Compact 3 Door BCC3EN
£879.00



Sandwich/Salad Prep Unit

Tulle



- Has 2 doors, 4 shelves and 12 pans on top
- Temp. range: +0.5°C / +5°C
- Available in other sizes/ combinations
- S/steel front, top and ends, matching aluminium finished back
- Heavy duty PVC coated wire shelves
- 1228mm(W) x 764mm(D) x 934mm(H)

10660
Sandwich/Salad Prep TSSU-48-12
£1,910.00



Pizza Prep Counter

Blizzard

- S/steel interior and exterior
- Temp. range: +2°C / +8°C
- Granite work top
- Includes separate prep top cooler which accepts 1/3 GN containers max 150mm (not supplied)
- 1510mm(W) x 800mm(D) x 1435mm(H)

10303
C/W topping unit BPIZ1500 c/w TOP1500CR
£1,499.00



Prep Stations

FPS

- Available in 2 or 3 door
- S/steel exterior, aluminium interior
- Temp. range: +1°C / +4°C
- Fan assisted forced air refrigeration system delivers even temperature to the counter base and pan storage section
- Choice of pan configurations
- 1140mm(W) x 850mm(D) x 1060mm(H) - 2 Door
- 1720mm(W) x 850mm(D) x 1060mm(H) - 3 Door

80460
2 Door FPS2HR
£2,799.00
80461
3 Door FPS3HR
£3,629.00



WAREWASHING

REFRIGERATION

PREPARATION

COOKING APPLIANCES

BEVERAGE

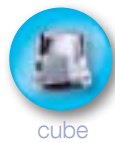
HEATED DISPLAY

CHILLED DISPLAY

FLY KILLERS

ASIAN COOKLINE

Icemakers – Cube



cube



- 3 year warranty
- All models are WRAS approved
- All models use a spray system that minimises scaling and produces separate cubes of crystal clear ice which are slow melting
- Extra cold ice produced at -25°C
- Capable of operating in ambient temperatures of between 10°C and 43°C
- Supply water temperature between 3°C and 32°C
- Easy clean ice storage in tough ABS
- All models (except M22-5 13 grams only) are available to special order for the production of cubes of 13 and 33 grams

For maximum production at high ambient temperatures all models are available to special order as water cooled versions at the same price.

Technical

- Voltage 240V – single phase – 13 amp
- All models supplied with UK 3 pin moulded plug
- Require water supply pressure between 1 and 6 bar
- Optimum ice production is at an ambient temperature of 21°C. Higher temperatures will dramatically reduce ice production

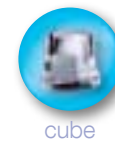
To produce ice of good quality all machines must have water softeners fitted to the water supply and must be of sufficient capacity and maintained in good order.



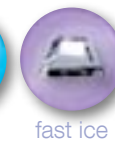
Miniphos scale inhibitor

Code	Model	Production Kgs per 24hrs	Bin Capacity Kgs	Storage Capacity x Standard Cube Size	Dimensions mm W x D x H (inc. feet)	Drain Height (inc. feet) mm	Water Consumption (air cooled) Litres/Kg	Water Consumption (water cooled) Litres/Kg	Price
23349	M22-5	21	5	310 x 13g	345 x 400 x 595	143	4.5	20	£635
23350	M30-10	28	10	530 x 18g	390 x 460 x 695	135	5.1	14	£785
23351	M34-16	34	16	950 x 18g	500 x 580 x 790	261	3.3	13	£885
32536	M42-16	42	16	950 x 18g	500 x 580 x 790	261	4.0	15	£975
23352A	M50-25	48	25	1470 x 18g	500 x 580 x 900	261	4.0	14	£1,015
23353	M65-40	65	40	2350 x 18g	738 x 600 x 1020	350	2.8	12.8	£1,320
23354	M90-55	90	55	3240 x 18g	738 x 600 x 1120	350	2.5	14.2	£1,525
23355	M130-65	130	65	3830 x 18g	840 x 740 x 1175	355	2.8	15.3	£1,935
32519	M155-65	155	65	3830 x 18g	840 x 740 x 1175	355	2.6	13	£2,135

Icemakers – Modular



cube



fast ice



- 12 months warranty
- All models are WRAS approved
- MVM range produce a mini 7 gram cube suitable for fast food outlets serving carbonated drinks
- MC range produce dense, slow melting cubes, **standard 18 gram cubes**, 13 or 33 gram cube models available to special order
- Extra cold ice produced at -25°C
- Capable of operating in ambient temperatures of between 10°C and 43°C
- Supply water temperature between 3°C and 32°C

For maximum production at high ambient temperatures all models are available to special order as water cooled versions at the same price.

All modular units will require an ice storage bin, please call for details.

Technical

- Voltage 240V – single phase
- 1 to 6 bar operating water pressure
- Optimum ice production is at an ambient temperature of 21°C. Higher temperatures will dramatically reduce ice production

To produce ice of good quality all machines must have water softeners fitted to the water supply and must be of sufficient capacity and maintained in good order.



Don't forget to order your Storage Bin – please call for details.

Code	Model	Production Kgs per 24hrs	Dimensions mm W x D x H	Drain Height mm	Water Consumption (air cooled) Litres/Kg	Water Consumption (water cooled) Litres/Kg	Gross Weight Kgs	Power kW (Max Amps)**	Price
10348	MVM350	140	540 x 544 x 747	42"	3	13.5	85	1.4 (13)	£1,655
23361	MVM500	200	770 x 550 x 805	40"	2.4	13	90	1.6 (20)	£2,185
30081	MVM900	400	770 x 550 x 805	40"	1.8	13	113	3 (32)	£2,815
95201	MVM1700	750	1250 x 645 x 950	65"	1.4	N/A	186	4.3 (32)	£6,290
23364A	MC150	155	862 x 555 x 720	297"	2.6	13	118	1.4 (13)	£2,015
51059	MC300	300	1250 x 580 x 848	73"	2.6	14.3	152	2.6 (32)	£3,260

Height of drain is for modular unit only, add height of bin for overall height.

** The amps rating is required as during the harvest cycle the unit draws a higher current, failure to fuse correctly may result in equipment failing to work correctly.

WAREWASHING

REFRIGERATION

PREPARATION

COOKING APPLIANCES

BEVERAGE

HEATED DISPLAY

CHILLED DISPLAY

FLY KILLERS

ASIAN COOKLINE

Icemakers – Slim Bin Cube



New Maidaïd®
slim bin | Ice cube modular range



Don't forget to order your Storage Bin – please call for details.



SLIM132



SLIM192



SLIM195E
(Illustration shown with storage bin MSB105 – not included)



- 12 month warranty
- **All NEW RANGE**
- 560mm wide units for small spaces
- SLIM195E Hydrocarbon with Zero environmental impact
- Soft touch control panel
- Standard cube 10 gram 22 x 22 x 24mm
- Half cube 6 gram and large cube 17 gram options
- Vertical evaporation design
- Excellent service accessibility
- Works in ambient temperatures between 10°C and 45°C
- Supply water temperature between 5°C and 35°C

For maximum production at high ambient temperatures models SLIM132 & 192 are available to special order as water cooled versions at the same price.

All slim bin modular units will require an ice storage bin, please call for details.

Technical

- Voltage 240V – single phase
- All models 13 amp
- 1 to 5 bar operating water pressure
- Optimum production is achieved at ambient and water supply temperatures of 21°C and 10°C
- Ambient and water supply temperature will affect ice production capacity

To produce ice of good quality all machines must have water softeners fitted to the water supply and must be of sufficient capacity and maintained in good order.

Code	Model	Production Kgs per 24hrs	Dimensions mm W x D x H (inc. feet)	Drain Height mm	Water Consumption (air cooled) Litres/Hour	Water Consumption (water cooled) Litres/Hour	Gross Weight Kgs	Power kW (Max Amps)	Price
95202	SLIM132	154	560 x 620 x 575	42.5*	7.0**	107**	53	1.7 (13)	£1,880
95203	SLIM192	225	560 x 620 x 660	43.5*	11.0**	126**	68	2.4 (13)	£2,130
95204	SLIM195E	210	560 x 620 x 660	43.5*	9.2**	Not available	68	2.85 (13)	£2,305

Height of drain is for modular unit only, add height of bin for overall height.

When in ice production mode.

** The amps rating is required as during the harvest cycle the unit draws a higher current, failure to fuse correctly may result in equipment failing to work correctly.

Icemakers

Ice Crusher



- Capacity: 1.2kg per 30 seconds
- Equipped with a heavy duty and quiet induction motor
- Can be both automatic and manual
- 236mm(W) x 353mm(D) x 474mm(H)



49165
SANTOS 53
£560.00

Cube Ice Machine



- Capacity: 250kg per 24 hours
- Closed water circuit offers the ultimate contamination protection
- 1084mm(W) x 700mm(D) x 500mm(H)



10435
Modular IM240DNE
£2,799.00



Call us for more information and prices on 0845 130 9070

- High Quality Modular & Bespoke coldrooms
- Our ranges of sizes and delivery service is second to none
- Our goal is to excite our customers
- We are big on quality
- Flexibility is our strength



WAREWASHING

REFRIGERATION

PREPARATION

COOKING APPLIANCES

BEVERAGE

HEATED DISPLAY

CHILLED DISPLAY

FLY KILLERS

ASIAN COOKLINE

Bottle Coolers

Halcyon Black Bottle Coolers

halcyon

- Available in single or double door
- 2 shelves per door
- 330ml bottle capacity: Single - 104, Double - 169
- Electronic temperature control
- Energy efficient
- Self closing doors
- 600mm(W) x 520mm(D) x 900mm(H) - Single Door
- 900mm(W) x 520mm(D) x 900mm(H) - Double Door



Also available with sliding doors!

- 51068** Single Door HBS600 £349.00
23203 Double Door HBS900 £399.00
23204 Double Door Sliding HBS900S £409.00

Blizzard Black Bottle Coolers

Blizzard

- Available in single, double or triple door
- 2 shelves per door
- Temp. range: +4°C / +12°C
- 330ml Bottle capacity: Single - 130, Double - 182, Triple - 293
- Self closing doors
- Black laminated exterior, S/steel interior
- 600mm(W) x 515mm(D) x 895mm(H) - Single Door
- 905mm(W) x 515mm(D) x 895mm(H) - Double Door
- 1355mm(W) x 515mm(D) x 895mm(H) - Triple Door



Also available with sliding doors!

- 51039A** Single Door BAR1 £299.00
50902A Double Door BAR2 £399.00
51206A Triple Door BAR3 £529.00



Tall Bottle Coolers

Blizzard

- Available in single or double door
- 5 adjustable chrome shelves as standard per door
- Temp. range: +3°C / +10°C
- 330ml Bottle capacity: Single - 324, Double - 492
- Black laminated exterior, S/steel interior
- 600mm(W) x 520mm(D) x 900mm(H) - Single Door
- 900mm(W) x 520mm(D) x 900mm(H) - Double Door



- 50335** Single Door BAR10 £599.00
50869 Double Door BAR20 £829.00

Maxiglass Noverta Double Door Bottle Coolers

Gamko

- Available in anthracite finish or s/steel
- Temp. range: +1°C / +18°C
- 33cl bottle capacity: 215
- Electronic thermostatic
- Lockable doors
- 2 adjustable shelves per door
- 900mm(W) x 536mm(D) x 910mm(H)



Also available with sliding doors!

- 10268** Anthracite finish MG1/250G £825.00
51233 S/Steel MG1/250GCS £919.00

Slide Top Bottle Cooler

Gamko

- Available in anthracite finish or s/steel
- Temp. range: +2°C / +12°C
- 33cl bottle capacity: 315
- Electronic thermostatic
- 2 shelves per door
- 902mm(W) x 622mm(D) x 920mm(H)



- 51188** Anthracite finish ST/210 £1,099.00
80440 S/Steel ST/210CS £1,185.00

Pass Through Bottle Cooler



- Black painted finish with hinged glass front and rear doors
- Temp. range: +1°C / +5°C
- 330ml bottle capacity: 255
- 1 shelf per door
- Digital temperature controller
- Available in brown or black, if stated at time of order
- Available as stainless steel finish if stated at time of order
- 1000mm(W) x 700mm(D) x 900mm(H)



Also available with sliding doors!

- 11615** Pass Through 2750 £1,199.00

WAREWASHING

REFRIGERATION

PREPARATION

COOKING APPLIANCES

BEVERAGE

HEATED DISPLAY

CHILLED DISPLAY

FLY KILLERS

ASIAN COOKLINE

Planetary Mixers

10 Litre Countertop Mixer



- 30 minute timer - mixer automatically stops when timer ends
- Comes with: dough hook, wire whisk, spatula, stainless steel mixing bowl, safety guard
- Comes with digital control panel to make easy speed shifts
- 332mm(W) x 449mm(D) x 538mm(H)



93022 Planetary Mixer 4075603 **1** £960.00

20 Litre Bench-Mounted Mixer



- 30 minute timer - mixer automatically stops when timer ends
- Comes with: dough hook, wire whisk, spatula, stainless steel mixing bowl, safety guard
- Emergency stop button
- 518mm(W) x 518mm(D) x 905mm(H)



93023 Planetary Mixer 4075703 **1** £1,980.00

Countertop Mixers



- Available in 5 or 7 Litre
- Comes with: whisk, dough hook, stainless steel bowl
- Fully interlocked for safety
- Head lifts for easy removal
- 240mm(W) x 410mm(D) x 425mm(H)



41235 5 Litre Countertop SM5 **1** £328.33
93104 7 Litre Countertop SM7 **1** £349.17

Bench-Mounted Mixers



- Available in 9 or 20 Ltr
- Comes with: bowl, whisk, dough hook, attachment hub
- Powerful 3 speed transmission
- 410mm(W) x 450mm(D) x 770mm(H) - 9 Ltr
- 500mm(W) x 520mm(D) x 890mm(H) - 20 Ltr



40463 9 Litre Bench SP-100 **1** £1,568.33
40464 20 Litre Bench SP-200 **1** £1,829.17

Blenders

908 Blender 1.25 Litre



- Suitable for frozen drinks
- Entry level blender, polycarbonate container included
- Two speed option enables precision blending
- Removable filler-cap allows adding ingredients while blending
- 165mm(W) x 203mm(D) x 387mm(H)



23094 HBB908-UK Blender **1** £214.29
23859 Spare 1.25Ltr Polycarb Jug **1** £60.09

Rio Blenders



- Suitable for frozen drinks
- Available in 0.95Ltr stainless steel jug or 1.25Ltr polycarbonate jug
- Two speeds with pulse option
- 165mm(W) x 203mm(D) x 393mm(H) - S/steel jug
- 165mm(W) x 203mm(D) x 406mm(H) - Polycarbonate jug



80012 S/Steel HBB250S-UK **1** £291.43
33160 Polyarb HBB250-UK **1** £265.71

Tango Blender 1.4 Litre



- Suitable for frozen drinks and smoothies
- Time automatically turns off at preset time
- Two speed with pulse option
- 154mm(W) x 229mm(D) x 432mm(H)



75005 Tango Blender HBH450-UK **1** £411.43
80419 Spare 1.4Ltr Polycarb Jug **1** £102.86

Tempest Blender 1.8 Litre



- Suitable for frozen drinks, smoothies, iced coffee and ice cream
- High performance blender with wave action system
- Two speeds, jump cycle and pulse
- 178mm(W) x 203mm(D) x 457mm(H)



80209 Tempest Blender HBH650-UK **1** £762.86
80420 Spare 1.8Ltr Polycarb Jug **1** £145.71

Blendtec Chef with Sound Enclosure



- Creates blended drinks, soups and sauces
- High power 2000W motor
- Variable speed offers precise manual control
- 20 speed settings
- Complete with 3 containers
- Also available without the sound enclosure
- 3 years parts warranty
- 229mm(W) x 229mm(D) x 464mm(H)



80427 Blendtec Chef with sound enclosure **1** £1,119.00

Omega 1 HP Blender

- Offers quick intuitive performance for soups, smoothies, iced drinks and more
- Self-lubricating ball bearings
- 3.2kg
- 159mm(W) x 209mm(D) x 400mm(H)



49086 Blender FPMX0373 **1** £136.00

Omega 3 HP Food/Bar Blender

- Blends an endless variety of ingredients and combinations into a smooth, silky texture
- 6.8kg
- 197mm(W) x 229mm(D) x 489mm(H)



49087 Blender FPMX0378 **1** £395.00



Kisag
Power Stick
Blender 20

Stick Blenders & Mixers

Kisag Power Stick Blender 20



- 250 Watt power
- Continuous run of 8 minutes
- Ergonomic design
- Two speed motor
- 20 Ltr capacity
- Designed not to roll off countertops
- Full length: 380mm, Shaft length: 200mm



38932
Blender 20 FPMX0274
1 £121.00

Kisag Power Stick Blenders



- 550 Watt power
- Continuous run of 15 minutes
- Ergonomic design
- 150ltr capacity - 40, 200ltr capacity - 50
- Designed not to roll off countertops
- Full length: 610mm, Shaft length: 400mm - 40, Full length: 760mm, Shaft length: 500mm - 50



49078
Blender 40 FPMX0275 1 £399.00
49079
Blender 50 FPMX0276 1 £448.50

Mini MP 190 Combi



- 250 Watts, 190mm total length
- Self regulating speed system
- Comes with 1 stainless steel wall support
- Mixer or whisk function
- Removable stainless steel blade and bell
- Variable speed 2000-12500 rpm in mixer function
- Variable speed 350-1500 rpm in whisk function



40494
Mini MP 190 Combi
1 £370.00

Mini Range Power Mixers



- Mini MP 160 V.V -220 Watts-430mm total length
- Mini MP 190 V.V -250 Watts-470mm total length
- Mini MP 240 V.V -270 Watts-520mm total length
- Blades, foot and tube can be taken apart
- Variable speed 2000-12500 rpm



37541
Mini MP 160 V.V
1 £195.00
24578
Mini MP 190 V.V
1 £240.00
23958
Mini MP 240 V.V
1 £280.00

Compact Range Power Mixers



- CMP 250 V.V -310 Watts-610mm total length
- CMP 300 V.V -350 Watts-660mm total length
- CMP 350 V.V -400 Watts-718mm total length
- Removable stainless steel blade and bell
- Variable speed 2300-9600 rpm



23853
CMP 250 V.V
1 £310.00
93138
CMP 300 V.V
1 £330.00
23876
CMP 350 V.V
1 £350.00

Large Range Power Mixers



- MP 350 Ultra-440 Watts-725mm total length
- MP 350 V.V Ultra-440 Watts- 725mm total length
- MP 450 V.V Ultra -500 Watts-825mm total length
- V.V Ultra models have self regulating speed
- Variable speed 1500-9000 rpm - V.V Ultra models



31977
MP 350 Ultra
1 £350.00
33149
MP 350 V.V Ultra
1 £389.00
38673
MP 450 V.V Ultra
1 £425.00

Bamix Gastro 200 Mixer

- Can be used in liquids up to 20ltrs
- 200 Watts - 185mm total length
- 3 blade attachments



38928
Mixer FPBX0007
1 £149.10

WAREWASHING

REFRIGERATION

PREPARATION

COOKING APPLIANCES

BEVERAGE

HEATED DISPLAY

CHILLED DISPLAY

FLY KILLERS

ASIAN COOKLINE

Juicers and Drinks Mixers

1 Spindle Drinks Mixer

- Suitable for milkshakes, smoothies and frozen cocktails
- 3 speeds plus pulse switch
- Can use pulse switch or cup guide to start and stop mixing
- 165mm(W) x 171mm(D) x 521mm(H)



20506 1 Cup mixer HMD200-UK **1** £420.00

3 Spindle Drinks Mixer

- Suitable for milkshakes, smoothies and frozen cocktails
- 3 speeds plus pulse switch
- Each mixer operates separately
- 318mm(W) x 229mm(D) x 521mm(H)



93028 3 Cup mixer HMD400-UK **1** £1165.71

Slush Machine Dispenser

ugolini

- Suitable for slush and frozen drinks
- S/steel body and illuminated cover
- Fast freeze hollow cylindrical evaporator
- 10 Ltr bowl capacity
- 180mm(W) x 470mm(D) x 690mm(H)



75659 Ugolini Slush MT1 **1** £1,599.00

Essential Juicer

ZUMEX

- 300 Watt Power
- 14 fruits/ 1 Ltr per minute
- Fruits up to 81mm diameter
- Feeder capacity 6-8 fruits
- 470mm(W) x 500mm(D) x 880mm(H)



80524 Zumex Essential Juicer **1** £2,795.00

Automatic Juicer J80 Ultra

robot-coupage

- 0.7 kW power
- Induction motor
- Continuous pulp ejection
- Comes with s/steel sieve and bowl, 6.5Ltr translucent pulp container and drip tray
- No-splash juice spout
- 235mm(W) x 420mm(D) x 505mm(H)



33150 J80 Ultra Juicer **1** £860.00

Automatic Juicer J100 Ultra

robot-coupage

- 1kW power
- Induction motor
- Continuous pulp ejection
- Comes with s/steel sieve and bowl, ejection chute, 7.2Ltr large capacity translucent pulp container and drip tray
- 235mm(W) x 420mm(D) x 505mm(H)



93139 J100 Ultra Juicer **1** £1,069.00

Apollo Juicer

SIRMAN

- 0.15kW power
- Commercial easy to use citrus juicer
- S/steel bowl is removable
- Lid with lever and variable speed model available on request
- ABS body
- 210mm(W) x 210mm(D) x 280mm(H)



93024 Apollo Juicer **1** £251.43

Mercurio Juicer

SIRMAN

- 0.15kW power
- Commercial easy to use citrus juicer
- Stainless steel bowl is removable
- Lid with lever and variable speed model available on request
- Aluminium body
- 210mm(W) x 300mm(D) x 355mm(H)



93029 Mercurio Juicer **1** £373.21

Omega Citrus Juicer

- Pulp ejection
- Chrome finish
- 9.07kg
- 254mm(D) x 400mm(H)



49089
Juicer FPMX0403
1 £390.62

Omega Megamouth Juicer

- 500 Watt Power
- Pulp ejection juicer
- Chrome finish
- 7.25kg
- 203mm(W) x 318mm(D) x 381mm(H)



49088
Juicer FPMX0402 **1** £250.00

Omega Masticating Juicer

- Ability to juice at low speed minimises heat build up and oxidation giving healthy fresh juice
- Continuous juicing with automatic pulp ejection
- Engineered for quiet operation and long life
- 165mm(W) x 368mm(D) x 394mm(H)



49090 Juicer FPMX0374 **1** £289.00

Juice Extractor

Dualit.

- 1.6ltr Capacity
- Patented double filter mechanism with s/steel micro mesh filter providing juice without froth
- Black/Silver
- 220mm(W) x 405mm(D) x 320mm(H)



Domestic product no commercial warranty

30820 Extractor 88305 **1** £104.17

Vegetable Preparation

R201XL Food Processor

robot coupe

- 0.55kW power
- Speed 1500 rpm
- R201XL - 2.9 ltr bowl in ABS with handle

- R201XL Ultra - 2.9 ltr bowl s/steel with handle
- Polycarbonate lid designed to allow ingredients to be added whilst processing
- 220mm(W) x 280mm(D) x 495mm(H)



23871 R201XL - Polycarbonate 1 £659.00

30797 R201XL Ultra - S/Steel Bowl 1 £859.00

R301 Food Processor

robot coupe

- 0.6kW power
- Speed 1500 rpm

- R301 - 3.7 ltr bowl in ABS with handle
- R301 Ultra - 3.7 litre bowl s/steel with handle
- Polycarbonate lid designed to allow ingredients to be added whilst processing
- 220mm(W) x 360mm(D) x 445mm(H)



33141 R301 1 £1,079.00

38305 R301 Ultra 1 £1,218.00

CL50

robot coupe

- 0.55kW power
- Induction motor, s/steel motor base
- Speed 375 rpm

- CL50 - polycarbonate motor base
- CL50 - s/steel motor base
- Metal vegetable bowl and lid
- 350mm(W) x 320mm(D) x 590mm(H)



38956 CL50 1 £995.00

33144 CL50 Ultra 1 £1,234.00

Table Top Cutter R4-1500

robot coupe

- 0.7kW power
- 4.5 ltr s/steel bowl with handle
- Induction motor, metal and composite motor base

- Pulse function
- Smooth blade supplied as standard
- Speed 1500 rpm
- 226mm(W) x 304mm(D) x 440mm(H)



33145 R4-1500 1 £1,069.00

R211XL Food Processor

robot coupe

- 0.55kW power
- Speed 1500 rpm
- 2.9 Ltr bowl stainless steel with handle
- Polycarbonate lid designed to allow ingredients to be added whilst processing
- 220mm(W) x 360mm(D) x 445mm(H)



38497 R211XL Ultra - S/Steel Bowl 1 £969.00

R402 Food Processor

robot coupe

- 0.75kW power - R402, 1kW - R402VV
- R402 speed 500/750 and 1500 rpm

- R402 V.V speed 300-3500 rpm
- 5.4 litre bowl s/steel with handle
- Standard smooth blade with removable cap
- 320mm(W) x 304mm(D) x 590mm(H)



33142 R402 1 £1,485.00

33143 R402 V.V 1 £2,099.00

CL52

robot coupe

- 0.75kW power
- Designed for large amounts of vegetables
- Induction motor, s/steel motor base

- Speed 375 rpm
- Metal vegetable bowl and lid
- 360mm(W) x 340mm(D) x 690mm(H)



33154 CL52 1 £1,599.00

Table Top Cutter R4 V.V

robot coupe

- 1kW power
- 4.5 litre stainless steel bowl with handle
- Induction motor, metal and composite motor base

- Pulse function
- Smooth blade supplied as standard
- Speed 300-3500 rpm
- 226mm(W) x 304mm(D) x 460mm(H)



33146 R4 V.V 1 £1,495.00

R201XL Food Processor



WAREWASHING

REFRIGERATION

PREPARATION

COOKING APPLIANCES

BEVERAGE

HEATED DISPLAY

CHILLED DISPLAY

FLY KILLERS

ASIAN COOKLINE

Vegetable Preparation

Blixer 3

robot prepager

- 0.75kW power
- Modified texture preparations
- 3.7ltr s/steel bowl with handle
- Induction motor, s/steel motor shaft
- Pulse function
- Speed 3000 rpm
- Fine serrated blade assembly supplied as standard
- 242mm(W) x 304mm(D) x 444mm(H)



30198 Blixer 3 **1** £1,105.00

Blixer 4-3000

robot prepager

- 0.9kW power
- Modified texture preparations
- 4.5 ltr s/steel bowl with handle
- Induction motor, metal and composite motor base
- Pulse function
- Speed 3000 rpm
- Fine serrated blade supplied as standard
- 242mm(W) x 332mm(D) x 479mm(H)



33147 Blixer 4-3000 **1** £1,165.00

Blixer 4 V.V

robot prepager

- 1.1kW power
- Modified texture preparations
- 4.5 ltr s/steel bowl with handle
- Induction motor, metal and composite motor base
- Pulse function
- Speed 300-3500 rpm
- Fine serrated blade supplied as standard
- 242mm(W) x 332mm(D) x 479mm(H)



33148 Blixer 4 V.V **1** £1,575.00

Combi Veg Prep and Food Processor



- Combines the CJ24 veg prep unit and the MC5 food processor in a single combined unit
- 0.75/1.5 hp motor

- Machine will slice, grate, julienne-cut, dice, chip and chop, knead, grind, mix, puree, liquidise and much more
- Fine serrated blade supplied as standard
- 530mm(W) x 490mm(D) x 615mm(H)



80456 CJ24 Combi **1** £1,637.50

Food Processors

Food Processor

Dualit.

- Featuring a powerful induction motor, bakery grade dough blade, three interconnecting bowls and nine tools for chopping, mixing, slicing and shredding
- 1.5kW induction motor
- Adjustable slicing disc for cuts of 0.5 to 7.5mm
- 200mm(W) x 240mm(D) x 410mm(H)

Domestic product no commercial warranty

49416
Chrome
1 £215.83



For best prices call our sales team on **0845 130 9070**

WAREWASHING

REFRIGERATION

PREPARATION

COOKING APPLIANCES

BEVERAGE

HEATED DISPLAY

CHILLED DISPLAY

FLY KILLERS

ASIAN COOKLINE

Slicers

MIRRA Medium Duty Slicers



- Available in 3 blade sizes - 220mm (8"), 250mm (10") and 300mm (12")
- Cut size - 0-13mm
- 220 and 250 - Motor 147W
- 300 - Motor 210W
- 570mm(W) x 560mm(D) x 475mm(H) - 220 and 250
- 640mm(W) x 610mm(D) x 510mm(H) - 300



- | | |
|----------------------------|------------------|
| 93030 MIRRA 220 8" | 1 £522.50 |
| 51195 MIRRA 250 10" | 1 £534.29 |
| 93031 MIRRA 300 12" | 1 £864.29 |

CANOVA Heavy Duty Slicer



- Rounded design with no sharp edges
- 300mm(12") blade
- Cut size - 0-20mm
- Motor 210W
- 640mm(W) x 495mm(D) x 495mm(H)



- | | |
|-----------------------|-------------------|
| 6546 | 1 £1005.71 |
| CANOVA 300 12" | |

NS Medium Duty Slicers



- Available in 3 blade sizes - 220mm (8"), 250mm (10") and 300mm (12")
- NS220 and NS250 - Motor 130W
- NS300 - Motor 180W
- 590mm(W) x 130mm(D) x 370mm(H) - NS220
- 590mm(W) x 430mm(D) x 410mm(H) - NS250
- 630mm(W) x 440mm(D) x 570mm(H) - NS300



- | | |
|--------------------------|------------------|
| 93103 220mm NS220 | 1 £554.17 |
| 50349 250mm NS250 | 1 £562.50 |
| 80291 300mm NS300 | 1 £829.17 |

NS Heavy Duty Slicers



- Available in 2 blade sizes - 250mm (10") and 300mm (12")
- NS250HD - Motor 180W
- NS300HD - Motor 242W
- 630mm(W) x 440mm(D) x 460mm(H) - NS250HD
- 680mm(W) x 560mm(D) x 570mm(H) - NS300HD



- | | |
|----------------------------|--------------------|
| 93102 250mm NS250HD | 1 £907.50 |
| 32504 300mm NS300HD | 1 £1,412.50 |

PALLADIO Heavy Duty Slicers



- Available in 2 blade sizes - 300mm(12") or 350mm (14")
- Cut size - 0-30mm
- Motor 275W
- 710mm(W) x 547mm(D) x 545mm(H) - 300
- 710mm(W) x 575mm(D) x 530mm(H) - 350



- | | |
|-------------------------------|--------------------|
| 93032 PALLADIO 300 12" | 1 £1,382.86 |
| 93033 PALLADIO 350 14" | 1 £1,587.14 |

Pantheon Meat Slicer



- 18kW power
- 10" Blade
- Stain resistant anodised aluminium finish
- Comes with blade removal tool
- 500mm(W) x 385mm(D) x 360mm(H)



- | | |
|---------------------------|------------------|
| 65147 | 1 £390.00 |
| Pantheon 10" MS250 | |

Potato Peelers

PPJ S/Steel Potato Peelers



- Available in 6 and 10kg capacity
- 0.37kW power - 6kg, 0.74kW - 10kg
- Removable bowl
- Heavy duty s/steel construction
- 530mm(W) x 370mm(D) x 390mm(H) - 6kg
- 554mm(W) x 470mm(D) x 910mm(H) - 10kg



- | | |
|-----------------------------|--------------------|
| 93035 6kg PPJ 6 | 1 £1,210.00 |
| 93034 10kg PPJ 10 SC | 1 £1,642.14 |

10LB and 15LB Potato Peelers



- Bench mounted models
- Both sizes available in hammer grey painted and natural aluminium
- Motor - 0.33hp
- 320mm(W) x 480mm(D) x 370mm(H) - 10Lbs
- 320mm(W) x 480mm(D) x 450mm(H) - 15Lbs



- | | |
|--------------------------------------|--------------------|
| 42025 EP10 Grey Painted 10Lbs | 1 £1,070.00 |
| 93105 NA10 Aluminium 10Lbs | 1 £1,150.83 |
| 93106 EP15 Grey Painted 15Lbs | 1 £1,313.33 |
| 93107 NA15 Aluminium 15Lbs | 1 £1,399.17 |

WAREWASHING

REFRIGERATION

PREPARATION

COOKING APPLIANCES

BEVERAGE

HEATED DISPLAY

CHILLED DISPLAY

FLY KILLERS

ASIAN COOKLINE

Mincers

Medium Duty Meat Mincers



- TC8 - 0.25kW, 65kg, 6mm plate
- TC12 - 0.37kW, 80-90kg, 6mm plate
- TC22 - 0.75kW, 120kg, 4.5mm plate
- 335mm(W) x 300mm(D) x 410mm(H) - TC8
- 377mm(W) x 366mm(D) x 452mm(H) - TC12
- 395mm(W) x 360mm(D) x 485mm(H) - TC22



93038 TC8 VEGAS	1	£349.64
93036 TC12 DENVER	1	£502.86
93037 TC22 DAKOTA	1	£974.29

Cheese Graters

Parmesan Cheese Graters



- 0.38kW power
- Grate cheese and bread with uniformity, without waste
- 290mm(W) x 250mm(D) x 310mm(H)



93027 GP Grater 0.38kW	1	£306.43
----------------------------------	---	---------

Dehydrator

Excalibur Dehydrator



- Uses ParaFlexx horizontal drying system
- 9 Large trays, 15" x 15" each
- 26 hour timer, unit automatically turns off when complete
- 7" fan
- 432mm(W) x 483mm(D) x 312mm(H)



50798 Excalibur Dehydrator 9 Tray	1	£249.00
---	---	---------

Burger Press

Hamburger Press



- Available in 100mm, 130mm or 150mm
- Heavy duty hand operated hamburger press
- Made from highly polished satin finished anodised aluminium and s/steel
- 305mm(W) x 255mm(D) x 310mm(H) - 100mm
- 320mm(W) x 270mm(D) x 310mm(H) - 130mm
- 330mm(W) x 280mm(D) x 310mm(H) - 150mm



10943 100mm 5BP4	1	£251.67
10944 130mm 5BP5	1	£273.33
80459 150mm 5BP6	1	£300.83

Ice Cream & Sorbet Machines

GT Touch 6 Litre

RECOMMENDED

- Produces ice cream, sorbet, granita, cold cream and frozen yoghurt
- Touch screen design
- Customisable display panel
- Available in white finish
- 260mm(W) x 425mm(D) x 650mm(H) - Single
- 450mm(W) x 425mm(D) x 650mm(H) - Twin



10852 GT Touch Single 6 Litre **1** £1,390.00

10853 GT Touch Twin 6 Litre **1** £2,345.00

U-Go Ice Cream and Frozen Yoghurt Machine

RECOMMENDED

- Counter top machine for the preparation of soft serve ice cream and frozen yoghurt
- Gravity feed system
- Hopper capacity 7 ltrs, Cylinder capacity 2.3 ltrs
- Minimum level warning light
- 357mm(W) x 652mm(D) x 648mm(H)



80449 U-Go Ice Cream **1** £3,939.00

Automatic Gelato Chef 5L

NEMCO

- Includes auto storage mode
- Can produce up to 1kg in 20-30 minutes
- S/steel removable bowl
- 3ltrs an hour
- 450mm(W) x 320mm(D) x 315mm(H)



99272 Gelato FPMX0489 **1** £1,091.78

Manual Gelato Pro 2500SP 1.4ltr

NEMCO

- Can produce up to 1kg of mixture in 20-25 minutes
- S/steel removable bowl
- 4.5ltrs an hour
- 2.5ltr volume bowl
- 415mm(W) x 415mm(D) x 300mm(H)



49081
Gelato FPMX0396
1 £999.98

Automatic 4K Touch Screen

NEMCO

- Can produce up to 1kg of mixture in 15 minutes
- S/steel removable bowl
- 6ltrs an hour
- 415mm(W) x 415mm(D) x 300mm(H)



99273
Gelato FPMX0488
1 £1,850.19

Manual Gelato 5K SC 1.75ltr

NEMCO

- Continuous operating capability allows rapid production of several different flavours
- S/steel removable bowl
- 7ltrs an hour
- 3.2ltr volume bowl
- 465mm(W) x 480mm(D) x 395mm(H)



49082
Gelato FPMX0395
1 £2,595.78

Manual Gelato Pro 12K 3.5ltr

NEMCO

- Highlights various advanced functions
- S/steel removable bowl
- 17ltrs an hour
- 6ltr volume bowl
- 450mm(W) x 730mm(D) x 105mm(H)



49083
Gelato FPMX0401
1 £6,024.18

Automatic Gelato 5K Crea 1.75ltr

NEMCO

- 4 specific programmes
- S/Steel removable bowl
- 7ltrs an hour
- 3.2ltr volume bowl
- 465mm(W) x 480mm(D) x 300mm(H)



49085
Gelato FPMX0428
1 £3,212.60

Automatic Gelato 6K Crea 2.5ltr

NEMCO

- 4 specific programmes
- S/Steel removable bowl
- 10ltrs an hour
- 5ltr volume bowl
- 580mm(W) x 530mm(D) x 450mm(H)



49084
Gelato FPMX0391
1 £3,958.00

great kitchens; great food; grateful chefs.

3D **NEW**
3D Kitchen Designs
 (example shown below)



Kitchen and bar design services

From our initial site visit to the completed job, Grey Simmonds can handle every aspect of your new or refurbished commercial kitchen...

- Initial consultation meeting
- Site survey
- Proposal
- Full site assessment
- Draft drawings
- 3D drawings
- Capital equipment
- Quotations
- Bespoke stainless steel fabrications
- Project management

For further information or to receive a copy of our kitchen design brochure call



whatever comes out of a professional kitchen...

0845 130 9070

...it's only as good as the thought that went into the kitchen design.



WAREWASHING

REFRIGERATION

PREPARATION

COOKING APPLIANCES

BEVERAGE

HEATED DISPLAY

CHILLED DISPLAY

FLY KILLERS

ASIAN COOKLINE

Oven Ranges Gas

6 Burner 2/1 GN

BLUE SEAL

- 51kW power
- 6 Burner cooktop range
- 6 x 7kW open burners
- Heavy duty stainless steel finish
- 900mm(W) x 812mm(D) x 1085mm(H)



50759 6 Burner G506D Natural **1** £1,666.67

65276 6 Burner G506D Propane **1** £1,666.67

Target Top 2/1 GN

BLUE SEAL

- 21.5kW power
- 900mm gas target top oven range
- 12.5kW dual ring cast iron burner
- Drop down door with welded frame
- 900mm(W) x 812mm(D) x 1085mm(H)



56615 G570 Natural **1** £2,573.33

65277 G570 Propane **1** £2,573.33

Dominator Plus 2/1 GN



- 38.9kW power
- 6 powerful open top burners
- Easy to clean removable hob
- High performance 5.3kW burners
- Semi-sealed, pressed stainless steel hob
- Vitreous enamelled oven chamber
- 900mm(W) x 770mm(D) x 890mm(H)



80368 G3101 Natural **1** £1,370.00

65278 G3101 Propane **1** £1,370.00

Restaurant Range Cooker 6 Burner

IMPERIAL

- 89kW power
- 610mm raised griddle, 610mm wide broiler grill
- 2 full size ovens
- Stainless steel backguard with high shelf as standard, legs at standard
- 1524mm(W) x 733mm(D) x 1435mm(H)



80443 IR-6-RG24 Natural **1** £5,999.00

65279 IR-6-RG24 Propane **1** £5,999.00



Oven Range Gas OPUS 700

Lincat

- 31.2kW - 4 burner natural, 29.6kW - 4 burner propane, 45.6kW - 6 Burner natural, 42.7kW - 6 burner propane
- Four shelf positions
- 600mm(W) x 737mm(D) x 950mm(H) - 4 Burners
- 900mm(W) x 737mm(D) x 950mm(H) - 6 Burners



51002
4 Natural OG7001/N
1 £1,697.33

50834
4 Propane OG7001/P
1 £1,697.33

51203
6 Natural OG7002/N
1 £1,702.00

93076
6 Propane OG7002/P
1 £1,702.00

Solid Top OPUS 700

Lincat

- 18kW power - natural gas, 17.5kW power - propane gas
- Double insulated doors, side and back panels
- Four shelf positions
- Easy clean sealed burner area
- 900mm(W) x 737mm(D) x 925mm(H)



51184 Solid Top Natural OG7005/N **1** £2,514.00

93080 Solid Top Propane OG7005/P **1** £2,514.00



6 Burner Medium Duty

Lincat

- 35kW power
- Heavy duty cast pan supports
- Powerful 4.5kW hob burners
- 2 chrome plate shelves
- 900mm(W) x 770mm(D) x 931mm(H)



93142 6 Natural LMR9/N **1** £1,678.60

93058 6 Propane LMR9/P **1** £1,678.60

6 Burner SILVERLINK 600

Lincat

- Large capacity oven, 35.5kW power
- Optional rear castors
- Powerful 4.5kW hob burners
- Four shelf positions with two removable chrome rod shelves
- 900mm(W) x 600mm(D) x 935/970mm(H)



50147 6 Natural SLR9/N **1** £1,444.67

37447 6 Propane SLR9/P **1** £1,444.67

Oven Ranges Electric

Static Oven 2/1 GN

BLUE SEAL

- 20.9kW power
- 6 radiant element cooktop range
- 6x 2.4kw open radiant elements
- Heavy duty s/steel finish
- Optional hot plate elements
- 900mm(W) x 812mm(D) x 1085mm(H)



65201
6 Plate E506D
1 £2,580.00

6 Plate SILVERLINK 600

Lincat

- 16.5kW power
- Twin fan assisted oven for consistent results
- Sealed hobs for easy cleaning
- Four shelf positions with two removable chromed rod shelves
- 900mm(W) x 600mm(D) x 900mm(H)



40470
6 Plate ESLR9C
1 £1,507.73

Solid Top OPUS 700

Lincat

- 15.4kW power
- Twin fan assisted oven for even heat and consistent results
- Three shelves and five shelf positions
- Outer edge spillage channel
- 900mm(W) x 737mm(D) x 900/955mm(H)



93068
Solid top OE7015
1 £2,876.00

6 Plate OPUS 700

Lincat

- 21.6kW power
- Twin fan assisted oven for consistent results
- Removable oven base, side and top liners
- High speed 2.6kW hot plates for rapid heat up
- Six heat positions provide maximum controllability
- 900mm(W) x 806mm(D) x 925mm(H)



32047
6 Plate OE7008
1 £3,064.00

Dual Fuel Oven Ranges

4 Burner OPUS 700

Lincat

- 22kW hob 4kW oven power - natural gas, 20.4kW hob 4kW oven - propane gas
- Electric fan assisted oven for consistent results
- 4 gas open burners
- Three oven shelves and five shelf positions
- 600mm(W) x 806mm(D) x 925mm(H)



93060
Natural Gas OD7006/N
1 £1,956.00
93061
Propane Gas OD7006/P
1 £1,956.00

6 Burner OPUS 700

Lincat

- 33kW hob 6kW oven - natural gas, 30.6kW hob 6kW oven - propane gas
- Electric fan assisted oven for consistent results
- 6 gas open burners
- Three oven shelves and five shelf positions
- 900mm(W) x 806mm(D) x 925mm(H)



93062
Natural Gas OD7007/N
1 £2,640.00
93063
Propane Gas OD7007/P
1 £2,640.00

Convection Ovens

Lynx 400 Counter Top Convection Oven

Lincat

- 2.5kW power
- Fan assisted for consistent results
- Double glazed door and internal light
- Two removable chrome rod shelves
- Vitreous enamelled interior
- 555mm(W) x 488mm(D) x 371mm(H)



32110
Lynx 400 LCO
1 £457.60

Counter Top Convection Oven 4 Grid

Lincat

- 7.5kW power
- High power oven
- Efficient air circulation with twin fans
- Accepts 1/1GN containers for convenient operation
- 766mm(W) x 811mm(D) x 629mm(H)



93045
4 Grid ECO9
1 £1,958.00

Charcoal Ovens

Josper Charcoal Oven with Table



- Smoke outlet vent
- Includes: one cooking grill rack, charcoal grates, josper tongs, iron brush, poker and ash pan
- Daily charcoal consumption 26.5lb to 35lb average
- Performance: 9h
- Capacity: 2 x 1/1 GN
- 905mm(W) x 750mm(D) x 1010mm(H)



10849

Charcoal Oven HJX45L

1 Call for Price

Smokers

Cookshack SmartSmoker



- 2 x 1.5kW thermostatically controlled heating elements
- Produce hot or cold smoked foods by application of heat and wood smoke
- Temp range 100° - 300°F
- Shelves: 6 610mm x 610mm grills, 127cm apart
- 690mm(W) x 790mm(D) x 1630mm(H)



10844 Cookshack Smoker SM260 **1** call for price

Manual Cook and Hold Oven

Alto-Shaam Cook and Hold Oven



- 2.4kW power
- Halo Heat - a controlled, uniform heat source that maintains close temperature tolerances
- 10 x 1/1 GN capacity
- Includes 3 wire shelves, 1 internal drip pan, 1 external drip pan, 89mm castors
- Cooks by time and automatically converts from cook mode to hold mode.
- 654mm(W) x 799mm(D) x 851mm(H)



80384 Cook & Hold 750-TH-11 **1** £5,692.14.00

advancedPVC®

High Performance PVC Wall Cladding

Economical

Save time and money on cleaning and maintenance with Advanced PVC. Our hygienic cladding systems are ideal for almost any area being highly impact resistant with incredible appearance retention and can be wiped clean in seconds.

Hygienic

Advanced PVC can be welded for a seamless finish making it a far cheaper and safer option compared to bacteria harbouring tiles and grout.

Guaranteed

Advanced PVC doesn't flake or corrode like paint and steel cladding will and comes with 20 years guarantee.

Perfect for kitchens, public areas, WC's, wet rooms, cold storage, laboratories and manufacturing facilities

Call us for more information and prices on 0845 130 9070



WAREWASHING

REFRIGERATION

PREPARATION

COOKING APPLIANCES

BEVERAGE

HEATED DISPLAY

CHILLED DISPLAY

FLY KILLERS

ASIAN COOKLINE

Bratt Pans

Gas Bratt Pan Tilting Electric

BLUE SEAL

- Single 6 bar stainless steel burner, 20kW power
- 900mm gas tilting bratt pan
- 80 Litre capacity
- Fold away handle
- 12mm thick s/steel even heat pan base
- 900mm(W) x 812mm(D) x 915/1085mm(H)



93007 80Ltr Tilting G580-8 Natural **1** £4,593.33

65280 80Ltr Tilting G580-8 Propane **1** £4,593.33

Dominator Bratt Pan Gas



- 14kW power
- 60 Litre capacity
- Stainless steel pan
- Manual tilt via front located handle
- Incremental opening lid
- 800mm(W) x 770mm(D) x 870mm(H)



10966
60Ltr Dominator G3800
1 £3,510.00

Multi-purpose ECLIPSE Wire Shelving

- **Available in 3 finishes**
- polished chrome, epoxy coated & stainless steel
- **Guarantee**
10 year anti corrosion guarantee for epoxy coated
- **Strong**
Up to **300kg** shelf load capacity
- **Economic**
Quick and easy to assemble
Reduce costs & improve access using add-on units
- **Flexible**
Fully adjustable - shelf heights every 25mm
Large range of accessories

Suitable for all catering environments: kitchens, prep areas, dry stores, cold storage and freezers.

Call us for more information and prices on 0845 130 9070

Shelfspan

making better use of space



Rational Combi Ovens

Self Cooking Centre

RATIONAL



- iCookingControl with 7 applications for meat, poultry, fish, side dishes, egg dishes and baked goods
- Low temperature cooking and overnight cooking
- Core temperature probe with 6 point measurements
- Digital temperature displays
- Time setting in hours/minutes or minutes/seconds
- 24 hour real time clock
- High performance steam generator with automatic water refill
- 6 Grid: Capacity - 6 x 1/1 GN / 12 x 1/2 GN, Power - 11kW electric, 13kW natural gas, 14kW propane gas
- 10 Grid: Capacity - 10 x 1/1 GN / 20 x 1/2 GN, Power - 18.6kW electric, 22kW natural gas, 24kW propane gas
- 20 Grid: Capacity 20 x 1/1 GN / 40 x 1/2 GN, Power - 37kW electric, 44kW natural gas, 48kW propane gas
- 847mm(W) x 771mm(D) x 782mm(H) - 6 Grid
- 847mm(W) x 771mm(D) x 1042mm(H) - 10 Grid
- 879mm(W) x 791mm(D) x 1782mm(H) - 20 Grid

10364 Electric 6 Grid SCC61

1 Call for Price

51241 Gas 6 Grid SCC61gas

1 Call for Price

65281 LPG Gas SCC61gas

1 Call for Price



10304

Electric 10 Grid SCC101

1 Call for Price

10102

Gas 10 Grid SCC101gas

1 Call for Price

65282

LPG Gas SCC101gas

1 Call for Price



10842

Electric 20 Grid SCC201

1 Call for Price

10212

Gas 20 Grid SCC201gas

1 Call for Price

65283

LPG Gas SCC201gas

1 Call for Price



Icon key Quantity

WAREWASHING

REFRIGERATION

PREPARATION

COOKING APPLIANCES

BEVERAGE

HEATED DISPLAY

CHILLED DISPLAY

FLY KILLERS

ASIAN COOKLINE

Rational Accessories

1/1 Grid Shelf



70056
1/1 Grid S/Steel
6010.1101
1 Call for Price

Machine Stand Open



- All Sides Open



50098
Machine Stand Open UG1
1 Call for Price

Machine Stand Closed



- 14 pairs of supporting rails. Side panels, top and rear closed



50001
Machine Stand Closed UG11
1 Call for Price

Ultravent Electric Hood



- The condensation technology absorbs and dissipates steam. There is no need for complicated and expensive installations to remove exhaust air.



10105
Ultravent 60.72.320
1 Call for Price

Heat Shield for Left Side Panel



- Available for the 6 grid or 10 grid models. Retrofitting a heat shield allows you to place a radiant heat source (e.g grill) near the left side panel.

10184
Heat Shield 6 grid 60.70.390
1 Call for Price

10147
Heat Shield 10 grid 60.70.391
1 Call for Price

Chicken Superspike



- 6 Chicken capacity, other sizes available. The chickens are arranged vertically on the patented superspikes, creating particularly succulent breast meat.

50936
6 Capacity 6035.1016 1 Call for Price



Rational Cleaning Tablets (Red)



60237
100 £72.75

Rational Care Tablets (Blue)



60257
150 £99.90

Rational Rinseaid Tablets (Blue)



60238
50 £51.50

Combi Ovens

Houno Slim Combi Ovens



- Available in 2 sizes, 1.06 model and 1.10 model
- 6.9kW power - 1.06 model, 10.4kW power - 1.10 model
- Slim line models with injected steam and touch screen controls
- Easy to read and easy to operate panel and crystal clear TFT display
- Up to 200 programs can be saved, easily with 10 process steps
- Available with core temperature probe, hand shower and the fully automatic CombiWash cleaning system
- Equipped with HACCP control, timer function and service diagnosis system
- 1/1 GN tray sizes
- Number of 20/40mm deep trays: 1.06 model has 6, 1.10 model has 10
- Number of 65mm deep trays: 1.06 model has 4, 1.10 model has 6
- Temperature ranges from 30°C-250°C
- 515mm(W) x 808mm(D) x 672mm(H) - 1.06 model
- 515mm(W) x 808mm(D) x 878mm(H) - 1.10 model



80447
Electric 6 Grid CPE1.06
1 £4,230.00



10810
Electric 10 Grid CPE1.10
1 £5,399.00

For more information
visit our website
www.greysimmonds.co.uk

WAREWASHING

REFRIGERATION

PREPARATION

COOKING APPLIANCES

BEVERAGE

HEATED DISPLAY

CHILLED DISPLAY

FLY KILLERS

ASIAN COOKLINE

Boiling Tops Gas

Boiling Top Gas OPUS 700

Lincat



- 11kW Natural gas or 10.2kW propane gas - 2 burner, 22kW natural gas or 20.4kW propane gas - 4 burner, 33kW natural gas or 30.6kW propane gas - 6 burner
- Dual concentric design of burners ensures full controllability even at low temperature cooking
- Fully sealed hob
- Low level flue to allow use of the complete hob top
- Supplied for use on counter-top or with optional floor stand
- 300mm(W) x 737mm(D) x 325mm(H) - 2 Burner
- 600mm(W) x 737mm(D) x 325mm(H) - 4 Burner
- 900mm(W) x 737mm(D) x 325mm(H) - 6 Burner



93081 Natural Gas OG7009/N **1** £794.00

93082 Propane Gas OG7009/P **1** £794.00



93077 Natural Gas OG7003/N **1** £1,147.33

93078 Propane Gas OG7003/P **1** £1,147.33



60225 Natural Gas OG7004/N **1** £1,491.33

93079 Propane Gas OG7004/P **1** £1,491.33

Boiling Top Gas SILVERLINK 600

Lincat



- 18kW power - 4 burner, 27kW power - 6 burner
- Fully pressed and sealed hob tops for easy cleaning
- Low level flue maximised working area and enables you to use large stock pots
- 600mm(W) x 600mm(D) x 305mm(H) - 4 Burner
- 900mm(W) x 600mm(D) x 305mm(H) - 6 Burner



93051 Natural Gas HT6/N **1** £715.73

93052 Propane Gas HT6/P **1** £715.73



93054 Natural Gas HT9/N **1** £930.60

93055 Propane Gas HT9/P **1** £930.60

For best prices call
our sales team on
0845 130 9070

Boiling Top Evolution Series

BLUE SEAL

- Available in 2,4,6 or 8 burner
- 14kW - 2 burner, 28kW - 4 burner, 42kW - 6 burner, 56kW - 8 burner
- 7kW rated open burners
- 12mm griddle plate
- Flame failure protection on all burners
- Heavy duty cast iron burners and enamelled pot stands
- 300mm(W) x 812mm(D) x 485mm(H) - 2 Burner
- 600mm(W) x 812mm(D) x 315/915mm(H) - 4 Burner
- 900mm(W) x 812mm(D) x 315/915mm(H) - 6 Burner
- 1200mm(W) x 812mm(D) x 315/915mm(H) - 8 Burner



51152

2 Burner G512D-B
Natural

1 £673.33

65284

2 Burner G512D-B
Propane

1 £673.33



65285 4 Burner G514D-B Natural

1 £1,260.00

65286 4 Burner G514D-B Propane

1 £1,260.00

65287 4 Burner with Leg Stand
G514D-LS Natural

1 £1,346.67

65288 4 Burner with Leg Stand
G514D-LS Propane

1 £1,346.67



65289 6 Burner G516D-B Natural

1 £1,513.33

65290 6 Burner G516D-B Propane

1 £1,513.33

65291 6 Burner with Leg Stand
G516D-LS Natural

1 £1,606.67

65292 6 Burner with Leg Stand
G516D-LS Propane

1 £1,606.67



65293 8 Burner G518D-B Natural

1 £1,840.00

65294 8 Burner G518D-B Propane

1 £1,840.00

65295 8 Burner with Leg Stand G518D-LS Natural

1 £2,006.67

65296 8 Burner with Leg Stand G518D-LS Propane

1 £2,006.67

*Height with splashback - 485mm

Boiling Tops Electric

Boiling Top OPUS 700

Lincat

- 10.4kW power - 4 burner, 15.6kW - 6 burner
- High speed 2.6kW plates for rapid heat up
- Large square hot plates
- Six heat positions provide maximum controllability
- Supplied for use on counter-top or with optional floor stand
- 600mm(W) x 737mm(D) x 325mm(H) - 4 Burner
- 900mm(W) x 737mm(D) x 325mm(H) - 6 Burner



93065
4 Plate OE7012

1 £1,303.33

93064
6 Plate OE7011

1 £1,704.00



Boiling Top SILVERLINK 600

Lincat

- 7kW power
- Also available in 2 and 6 plate models
- Hotplates 190mm/7.5" diameter
- Fully pressed and sealed hob tops for easy cleaning
- Six position switches control each plate
- 750mm(W) x 600mm(D) x 290mm(H)



93053 4 Plate HT7 1 £415.07

Boiling Top Evolution Series

BLUE SEAL

- 4.8kW power - 2 burner, 9.6kW - 4 burner
- Available in 2 or 4 element cooktop variations
- Heavy duty 2.4kW radiant elements
- Thermostatically controlled 12mm griddle plate
- 300mm(W) x 812mm(D) x 315mm(H) - 2 Burner
- 600mm(W) x 812mm(D) x 315/915mm(H) - 4 Burner



65297
2 Burner E512D-B
1 £706.67



65298 4 Burner E514D-B
1 £1,513.33
65299 4 Burner with Leg Stand E514D-LS
1 £1,580.00

*Height with splashback - 485mm

Pasta Boilers

Electric Single Tank OPUS 700

Lincat

- 6kW power
- Can be used as pasta boiler, steamer or bain marie
- Choice of optional pasta baskets
- 400mm(W) x 737mm(D) x 1050mm(H)



93074
Single Tank OE7701
1 £1,524.00



Countertop Electric SILVERLINK 600

Lincat

- 3kW power per tank
- Front mounted controls ensure safe working practice
- Front drain taps for fast, easy drainage of water
- 300mm(W) x 600mm(D) x 335mm(H) - Single Tank
- 600mm(W) x 600mm(D) x 335mm(H) - Twin Tank



93097
Single Tank PB33
1 £423.87
50914
Twin Tank PB66
1 £712.80

Gas Pasta Cooker

BLUE SEAL

- 13.5kW power, 40 Litre capacity
- Unique pan design
- Fine adjustment water faucet for pan filling
- Four stainless pasta baskets
- Water level and over temperature safety cut out
- 450mm(W) x 812mm(D) x 915mm(H)



65300 G47 Natural 1 £2,073.33
65301 G47 Propane 1 £2,073.33



WAREWASHING

REFRIGERATION

PREPARATION

COOKING APPLIANCES

BEVERAGE

HEATED DISPLAY

CHILLED DISPLAY

FLY KILLERS

ASIAN COOKLINE

Free Standing Fryers Gas

Single and Twin Tank

BLUE SEAL

- 25kW power
- 20 Litre oil capacity - Single tank
- 2 x 13 Litre oil capacity - Twin tank
- 2 x 12.5kW infrared burners
- 450mm(W) x 812mm(D) x 1085mm(H)



50122 Single Tank GT45 Natural

1 £1,833.33

65302 Single Tank GT45 Propane

1 £1,833.33

93014 Twin Tank GT46 Natural

1 £1,886.67

65303 Twin Tank GT46 Propane

1 £1,886.67

Single and Twin Tank OPUS 700

Lincat

- 16kW power - Single Tank, 32kW - Twin tank
- Fully welded tanks for ease of cleaning
- Deep cool zone to give extended oil life
- 300mm(W) x 737mm(D) x 1050mm(H) - Single
- 600mm(W) x 737mm(D) x 1050mm(H) - Twin



93085 Single Natural OG7110/N 1 £1,650.67

93086 Single Propane OG7110/P 1 £1,650.67

36526 Twin Natural OG7111/N 1 £2,552.67

50854 Twin Propane OG7111/P 1 £2,552.67

Single and Twin Tank SILVERLINK 600

Lincat

- 12kW - Single tank natural, 11.3kW - Singletank propane, 24kW - twin tank natural, 22.6kW - twin tank propane
- Thermostatic control ensures accurate oil temperature control
- 300mm(W) x 600mm(D) x 1065mm(H) - Single
- 600mm(W) x 600mm(D) x 1065mm(H) - Twin



65120 Single Natural J5/N 1 £978.67

80533 Single Propane J5/P 1 £978.67

40502 Twin Natural J10/N 1 £1,776.13

50768 Twin Propane J10/P 1 £1,776.13

Vortech Single Tank Fryer with Filtration

Lincat

- 22kW power
- 97% energy efficient with advanced design
- High volume, 51kg chips per hour
- Metallic alloy mesh pre-mix gas burner
- Fuzzy logic electronic temperature control
- 400mm(W) x 737mm(D) x 1105mm(H)



80444 Vortech Natural FV7115/F/N

1 £4,839.27

80445 Vortech Propane FV7115/F/P

1 £4,839.27

Free Standing Fryers Electric

Twin Tank

BLUE SEAL

- 17kW power
- 12 Litre per tank oil capacity
- Supplied with 2 standard baskets
- 3 x 2.83kW s/steel heating elements
- 450mm(W) x 812mm(D) x 1085mm(H)



50290

Twin pan E44

1 £1,886.67



Single and Twin Tank OPUS 700

Lincat

- 12kW power - Single 16Ltr, 22kW - Single 35Ltr, 24kW - Twin tank
- Accurate, close tolerance thermostat
- 300mm(W) x 737mm(D) x 1050mm(H) - 16Ltr
- 600mm(W) x 737mm(D) x 1050mm(H) - 35Ltr/Twin



93070 Single 16 Ltr OE7112 1 £1,226.00

93069 Single 35 Ltr OE7108 1 £1,806.67

50808 Twin Tank OE7113 1 £1,949.33

Single and Twin Tank SILVERLINK 600

Lincat

- 6kW power per tank
- Front mounted controls
- 9 Litre oil capacity (x2 for Twin Tank)
- 300mm(W) x 600mm(D) x 970mm(H) - Single
- 600mm(W) x 600mm(D) x 970mm(H) - Twin



50767 Single Tank J6 1 £495.33

32346 Twin Tank J12 1 £938.67

Solstice Single Tank

PRIMO

- 17kW power
- Digital controls as standard
- Heating elements are fixed in place
- 3 phase only
- Allows you to cook more product, more efficiently
- 397mm(W) x 762mm(D) x 1010mm(H)



80448

Solstice Single SE14S-D

1 £2,679.00

Countertop Fryers Gas

Single Tank SILVERLINK 600

Lincat

- 11.3kW power
- Thermostatic controls ensures accurate oil temperature control
- 8.5Ltr oil capacity
- 450mm(W) x 600mm(D) x 425mm(H)



93041

Single Natural Gas DF4/N

1 £930.60

93042

Single Propane Gas DF4/P

1 £930.60

Twin Tank SILVERLINK 600

Lincat

- 16kW power
- Thermostatic controls ensures accurate oil temperature control
- 2 x 6 Litre oil capacity
- 750mm(W) x 600mm(D) x 425mm(H)



93043

Twin Natural Gas DF7/N

1 £1,390.40

93044

Twin Propane Gas DF7/P

1 £1,390.40

Countertop Fryers Electric

Single Tank SILVERLINK 600

Lincat

- 3kW power - 9Ltr, 6kW - 15Ltr
- Front mounted controls
- 300mm(W) x 600mm(D) x 335mm(H) - 9Ltr
- 450mm(W) x 600mm(D) x 335mm(H) - 15Ltr



31678

9 Litre DF33

1 £342.00

32305

15 Litre DF46

1 £465.33

Twin Tank SILVERLINK 600

Lincat

- 2 x 3kW power
- Front mounted controls
- 2 x 9Ltr oil capacity
- 600mm(W) x 600mm(D) x 335mm(H)



31375

Twin Tank DF66

1 £584.67



Kennet Equipment Leasing is one of the UK's leading equipment finance suppliers.

We have provided finance to the catering and hospitality industry for more than 20 years, and are dedicated to providing leasing solutions that fits your individual requirements perfectly.

Kennet work with more and more companies who realise that buying new or used equipment via a finance package really does allow their business to grow. By offering fast decisions, solid advice and the continuity of service you would expect from an award-winning leasing specialist gives you the finance you need, on a plate.

Interested in knowing more about leasing?

Call **Cathy Bellamy** or **Laura Tocknell** on **01675 469225** or email greysimmonds@kennet-leasing.co.uk

Some of the benefits of leasing:

- Minimal cash outlay
- Avoidance of obsolescence
- Flexibility in payment terms and equipment
- Conservation of the business' working capital
- Tax benefits - each lease payment (including large deposits) can be offset fully against pre-tax profit
- Fast Application Turnaround
- 100% Financing

www.kennet-leasing.co.uk



Kennet
EQUIPMENT LEASING



Giving your business the power to grow

Kennet Equipment Leasing Limited, Kennet House, Temple Court, Temple Way, Coleshill, Birmingham B46 1HH. T: 01675 469200 F: 01675 469210

WAREWASHING

REFRIGERATION

PREPARATION

COOKING APPLIANCES

BEVERAGE

HEATED DISPLAY

CHILLED DISPLAY

FLY KILLERS

ASIAN COOKLINE

Salamander Grills Gas

900mm Gas Salamander

BLUE SEAL

- 8.8kW power
- 2 x 4.4kW individually controlled infrared burners
- Four position racking
- Left and right individual burner controls
- Suitable for bench or wall mounting
- 900mm(W) x 424mm(D) x 456mm(H)



93010 G91B Natural **1** £1,086.67
65304 G91B Propane **1** £1,086.67

Salamander Grill SILVERLINK 600

Lincat

- Available in 2 sizes, GR3 or GR7
- 5kW power - GR3, 6.5kW - GR7
- Powerful ceramic plate burner
- GR3 - Supplied with crumb tray and toasting grid
- GR7 - Supplied with double sided alloy branding plate and fat collection tray
- 600mm(W) x 350mm(D) x 405mm(H) - GR3
- 750mm(W) x 350mm(D) x 405mm(H) - GR7



50756 Natural Gas GR3/N **1** £664.40
50833 Propane Gas GR3/P **1** £664.40
65066 Natural Gas GR7/N **1** £966.53
37444 Propane Gas GR7/P **1** £966.53

Salamander Grill OPUS 700

Lincat

- 7.3kW power
- Powerful ceramic plate burners
- Integral fat collection channel
- 785mm(W) x 365mm(D) x 445mm(H)



93141 Natural Gas OG7301/N **1** £1,037.33
50844 Propane Gas OG7301/P **1** £1,037.33

Dominator Grill

- 6.6kW power
- Double cased with internal insulation
- Stainless steel exterior with cast iron linings
- Five position shelf runners
- Supplied with brander and nickel-plated grid shelf
- 785mm(W) x 355mm(D) x 350mm(H)



80365 Natural Gas G3532 **1** £899.00
65305 Propane Gas G3533 **1** £899.00

Salamander Grills Electric

900mm Electric Salamander

BLUE SEAL

- 2 x 3kW infrared elements
- Four position racking
- Left and right heat controls
- Suitable for bench or wall mounting
- 900mm(W) x 424mm(D) x 456mm(H)



93000
E91B
1 £1,086.67

Adjustable Salamander SILVERLINK 600

Lincat

- 2.8kW power
- Height markings and an audible timer to ensure consistent results
- 1/1 GN compatible
- 600mm(W) x 550mm(D) x 500mm(H)



37402
Adjustable SILVERLINK AS3
1 £869.73

Dominator Grill

- 3.9kW power
- Double cased with internal insulation
- S/steel exterior with cast iron linings
- Five position shelf runners
- Supplied with brander and nickel-plated grid shelf
- 785mm(W) x 360mm(D) x 325mm(H)



10845
Falcon Dominator E3532
1 £1,119.00

Salamander Grill SILVERLINK 600

Lincat

- 3kW power
- Five grill shelf positions
- Supplied with crumb tray and toasting grid
- 600mm(W) x 350mm(D) x 310mm(H)



37397
SILVERLINK GR3
1 £296.27

Salamander Grill OPUS 700

Lincat

- 5.5kW power
- Enamelled interior and top/front exterior for durability
- Integral fat collection channel
- 785mm(W) x 365mm(D) x 445mm(H)



51199
OPUS OE7304
1 £927.33

Therm-Max Salamander

Therm-Max

- 4kW power
- Two sets of independently controlled heating element sections
- Suitable for countertop or wall mounting
- 600mm(W) x 503mm(D) x 515mm(H)



80411
Therm-max TMS-1
1 £1,349.00

WAREWASHING

REFRIGERATION

PREPARATION

COOKING APPLIANCES

BEVERAGE

HEATED DISPLAY

CHILLED DISPLAY

FLY KILLERS

ASIAN COOKLINE



Griddles Gas

600mm Gas Griddle



- 14.5kW thermostatic burner system
- 20mm thick griddle plate
- Available as bench model or on leg stand
- 600mm(W) x 812mm(D) x 315/1085mm(H)



* Height with splashback - 485mm
* LS - c/w Leg Stand

- | | | |
|--|---|-----------|
| 93011 Bench Model GP514-B Natural | 1 | £1,840.00 |
| 65306 Bench Model GP514-B Propane | 1 | £1,840.00 |
| 93012 LS Model GP514-LS Natural | 1 | £2,006.67 |
| 65307 LS Model GP514-LS Propane | 1 | £2,006.67 |

900mm Gas Griddle



- 23kW thermostatic burner system
- 20mm thick griddle plate
- Available as bench model or on leg stand
- 900mm(W) x 812mm(D) x 315/1085mm(H)



* Height with splashback - 485mm
* LS - c/w Leg Stand

- | | | |
|--|---|-----------|
| 93013 Bench Model GP516-B Natural | 1 | £2,173.33 |
| 65308 Bench Model GP516-B Propane | 1 | £2,173.33 |
| 93005 LS Model GP516-LS Natural | 1 | £2,346.67 |
| 65309 LS Model GP516-LS Propane | 1 | £2,346.67 |

Machine Steel Plate OPUS 700

Lincat

- 10.6kW power
- Cooler holding zone at the front of the griddle plate
- 16mm thick machined steel griddle plate
- 700mm(W) x 737mm(D) x 450mm(H)



- | | | |
|-----------------------------------|---|-----------|
| 93087 Natural Gas OG7201/N | 1 | £1,586.67 |
| 93088 Propane Gas OG7201/P | 1 | £1,586.67 |

Half Ribbed Griddle OPUS 700

Lincat

- 10.6kW power
- Cooler holding zone at the front of the griddle plate
- 16mm thick machined steel griddle plate
- 700mm(W) x 737mm(D) x 450mm(H)



- | | | |
|-----------------------------------|---|-----------|
| 93091 Natural Gas OG7207/N | 1 | £1,618.67 |
| 93092 Propane Gas OG7207/P | 1 | £1,618.67 |

Machine Steel Plate SILVERLINK 600

Lincat

- 4.9kW power
- Piezo ignition
- 12mm thick machined steel plate
- 450mm(W) x 600mm(D) x 415mm(H)



- | | | |
|--------------------------------|---|---------|
| 93047 Natural Gas GS4/N | 1 | £662.20 |
| 93048 Propane Gas GS4/P | 1 | £662.20 |

Dominator Griddle



- 10.6kW power
- Polished steel plate provides even heat distribution
- Two thermostatically controlled gas burners
- Individual piezo ignition to each burner
- 600mm(W) x 770mm(D) x 455mm(H)



- | | | |
|--------------------------------|---|-----------|
| 10846 Natural Gas G3641 | 1 | £2,049.00 |
| 65310 Propane Gas G3641 | 1 | £2,049.00 |

WAREWASHING

REFRIGERATION

PREPARATION

COOKING APPLIANCES

BEVERAGE

HEATED DISPLAY

CHILLED DISPLAY

FLY KILLERS

ASIAN COOKLINE

Griddles Electric

600mm Electric Griddle



- 7.2kW power
- 20mm thick griddle plate
- Available as bench model or on leg stand
- 600mm(W) x 812mm(D) x 315/1085mm(H)

*Height with splashback - 485mm



93001 Bench Model EP514-B

1 £2,006.67

93002 Leg Stand Model EP514-LS

1 £2,086.67

Half Ribbed Griddle OPUS 700



- 11kW power
- Cooler holding zone at the front of the griddle plate
- 16mm thick machined steel griddle plate
- 900mm(W) x 737mm(D) x 450mm(H)



93072 OPUS OE7209 1 £1,352.00

900mm Electric Griddle



- 12kW power
- 20mm thick griddle plate
- Available as bench model or on leg stand
- 900mm(W) x 812mm(D) x 315/1085mm(H)

*Height with splashback - 485mm



93003 Bench Model EP516-B 1 £2,333.33

93004 Leg Stand Model EP516-LS 1 £2,513.33

Machine Steel Plate SILVERLINK 600



- 2.7kW power
- Fully welded plates
- 12mm thick machined steel griddle plate
- 450mm(W) x 600mm(D) x 330mm(H)



65250 SILVERLINK GS4 1 £396.00

Fully Ribbed Griddle SILVERLINK 600



- 4kW power
- Fully welded plates
- 12mm thick machined steel griddle plate
- 600mm(W) x 600mm(D) x 330mm(H)



65055 SILVERLINK GS6/TFR 1 £670.27

Machine Steel Plate OPUS 700



- 8kW power
- Cooler holding zone at the front of the griddle plate
- 16mm thick machined steel griddle plate
- 700mm(W) x 737mm(D) x 450mm(H)



80466 OPUS OE7205 1 £1,100.67

Half Ribbed Griddle SILVERLINK 600



- 4kW power
- Fully welded plates
- 12mm thick machined steel griddle plate
- 600mm(W) x 600mm(D) x 330mm(H)



51088 SILVERLINK GS6/TR 1 £573.47

Dominator Griddle



- 6.88kW power
- Polished steel plate provides even heat distribution
- 800mm(W) x 770mm(D) x 455mm(H)



80425 Falcon Dominator E3481 1 £1,599.00

For more information
visit our website
www.greysimmonds.co.uk

Chargrills Gas

Gas Chargrill with Leg Stand



- 19.8kW power - G594, 29.6kW - G596
- Comes with leg stand included
- 2 or 3 x 9.8kW 304 S/steel U-burners
- Interchangeable drop on griddle plates on G594 and reversible heavy-duty top grates on G596
- 600mm(W) x 812mm(D) x 915mm(H) - G594
- 900mm(W) x 812mm(D) x 915mm(H) - G596



*Height with splashback - 1085mm

93008 600mm G594-LS Natural 1 £1,953.33

65311 600mm G594-LS Propane 1 £1,953.33

93009 900mm G596-LS Natural 1 £2,093.33

65312 900mm G596-LS Propane 1 £2,093.33

Robata Flame Grill Table Mounted



- 26.5kW power
- Instant gas-fired cooking
- Even heat distribution
- 3 tier cooking for searing, cooking and resting
- Custom made to your specifications - also available in freestanding and countersunk
- 1460mm(W) x 482mm(D) x 550(H)



80392 Robata Flame Grill Natural Gas 1 call for price

65313 Robata Flame Grill Propane Gas 1 call for price

Gas Chargrill OPUS 700



- 20.5kW power
- Heat zones individually controlled for maximum versatility
- Sturdy one piece s/steel splashguard
- 900mm(W) x 737mm(D) x 450mm(H)



93095 Natural Gas OPUS OG7402/N

1 £1,995.33

93096 Propane Gas OPUS OG7402/P

1 £1,995.33

Gas Chargrill SILVERLINK 600



- 14.3kW power - natural, 14.5kW - propane
- Heat transfer radiants eliminate the need for messy lava rocks
- Twin heat zones
- 600mm(W) x 600mm(D) x 415mm(H)



50979 Natural Gas SILVERLINK CG6/N

1 £953.33

93040 Propane Gas SILVERLINK CG6/P

1 £953.33

Chargrill Electric

Electric Chargrill OPUS 700



- 2 x 8.25kW power
- Six independently controlled heat zones for maximum versatility
- Internal water bath provides humidity, keeping food succulent and reducing shrinkage
- 900mm(W) x 737mm(D) x 450mm(H)



93073

OPUS OE7406

1 £1,901.33

80469

Stand 670mm(H)

1 £314.67

Roband Grill Stations

For best prices call our sales team on

0845 130 9070

Roband Grill 6 Slice



- 2.2kW power
- Natural aluminium
- Available in smooth or ribbed top plates
- Teflon coated non stick plates available
- 435mm(W) x 490mm(D) x 220mm(H)



56622 Smooth GSA610S 1 £740.83

56623 Ribbed GSA610R 1 £740.83

Roband Grill 8 Slice



- 2.99kW power
- Natural aluminium
- Available in smooth or ribbed top plates
- Teflon coated non stick plates available
- 560mm(W) x 490mm(D) x 220mm(H)



80465 Smooth GSA815S 1 £865.83

10969 Ribbed GSA815R 1 £865.83

WAREWASHING

REFRIGERATION

PREPARATION

COOKING APPLIANCES

BEVERAGE

HEATED DISPLAY

CHILLED DISPLAY

FLY KILLERS

ASIAN COOKLINE

Contact Grills



Large Single Grill

SIRMAN

- 2.1kW power
- Available in flat, ribbed or flat/ribbed
- Also available in a smaller size at 260mm(W)
- Cast iron plates with ceramic coating
- 380mm(W) x 435mm(D) x 235mm(H)



30028 Flat Plate CORT LL T 1 £381.07

30022 Ribbed Plate CORT RR T 1 £381.07

30040 Flat/Ribbed Plate CORT LR T 1 £381.07

Single Grill LYNX 400

Lincat

- 2.25kW power
- Available in flat, ribbed or flat/ribbed
- Thermostatic control for consistent results
- 293mm(W) x 400mm(D) x 165mm(H)



30006 Flat Plate LCG 1 £305.80

40475 Ribbed Plate LPG 1 £305.80

30008 Flat/Ribbed Plate LRG 1 £305.80

Contact Panini Grill

Dualit

- 2.2kW power
- Ribbed top plate, flat bottom plate
- Thermostatic control for consistent results
- 510mm(W) x 450mm(D) x 210mm(H)



49419
Panini 96001
1 £229.00

Double Grill

SIRMAN

- 3kW power
- Available in flat or ribbed
- Cast iron plates with ceramic coating
- 515mm(W) x 435mm(D) x 235mm(H)



30041 Flat Plate PD LL-LL T 1 £542.14

30044 Ribbed Plate PD RR-RR T 1 £542.14

Twin Grill LYNX 400

Lincat

- 2 x 2.25kW power
- Available in flat, ribbed or flat/ribbed
- Thermostatic control for consistent results
- 623mm(W) x 400mm(D) x 165mm(H)



30009 LYNX 400 Flat LCG2 1 £528.73

51081 LYNX 400 Ribbed LPG2 1 £528.73

30249 LYNX 400 Flat/Ribbed LRG2 1 £528.73

Contact Double Grill

Dualit

- 2x1.8kW power
- Ribbed top plates, flat bottom plates
- Thermostatic control for consistent results
- 640mm(W) x 430mm(D) x 210mm(H)



49420
Double 96002
1 £299.00

WAREWASHING

REFRIGERATION

PREPARATION

COOKING APPLIANCES

BEVERAGE

HEATED DISPLAY

CHILLED DISPLAY

FLY KILLERS

ASIAN COOKLINE

Waffle Irons



- All single models require 1.5kW power, all double models require 3kW power
- Produce great tasting waffles in just a couple of minutes
- Concept carts available
- All models electric
- All single models are: 305mm(W) x 440mm(D) x 230mm(H)
- All double models are: 550mm(W) x 440mm(D) x 230mm(H)



80509 Single Brussels (3x5 Squares) - GES 10 **1** £609.00

80510 Double Brussels (3x5 Squares) - GED 10 **1** £1,169.00

80511 Single Liege (4x6 Squares) - GES 20 **1** £609.00

80512 Double Liege (4x6 Squares) - GED 20 **1** £1,169.00



80513 Single Corn (4 Corn Sticks) - GES 23 **1** £609.00

80514 Single Ice Cream (Crisp Cross Pattern) - GES 40 **1** £609.00

80515 Double Ice Cream (Crisp Cross Pattern) - GED 40 **1** £1,169.00



80516 Single 4 Piece Round - GES 75 **1** £609.00

80517 Double 4 Piece Round - GED 75 **1** £1,169.00



80518 Single 4 Piece Stick (4 Stick) - GES 80 **1** £609.00

80519 Double 4 Piece Stick (2 x 4 Stick) - GED 80 **1** £1,169.00



Crepe Machines

Crepe Machines

- 3kW power - single, 6kW - double
- Warming units available for sauces/ toppings
- Single models are: 450mm(W) x 500mm(D) x 240mm(H)
- Double models are: 860mm(W) x 500mm(D) x 240mm(H)



80520 400mm Single Electric 400CSE **1** £455.00
11048 400mm Single Gas 400CSG **1** £520.00
80522 400mm Double Electric 400CDE **1** £799.00
80523 400mm Double Gas 400CDG **1** £849.00

Portable Crepe Machines



80525 400mm Single Electric 400CFE **1** £349.00
80526 400mm Single Gas 400CFG **1** £379.00



Portable Crepe Machine

WAREWASHING

REFRIGERATION

PREPARATION

COOKING APPLIANCES

BEVERAGE

HEATED DISPLAY

CHILLED DISPLAY

FLY KILLERS

ASIAN COOKLINE

Rice Cookers

Rice Cookers



- 5.4 or 10Ltr capacity
- 1.7kW power - 5.4Ltr, 3.4kW - 10Ltr
- Non stick coated rice bowl
- 5.4Ltr comes with burn-proof pad, 10Ltr comes with rice napkin
- Measuring cup and spoon included
- 370mm(D) x 360mm(H) - 5.4Ltr
- 530mm(D) x 390mm(H) - 10Ltr



80409 5.4Ltr 5RSW5400 **1** £157.50

80408 10Ltr 5RSW1000 **1** £251.67

Rice Cooker/Warmer



- 1.65kW power
- 6Ltr capacity
- Non stick coated rice bowl
- Comes with burn-proof pad
- Measuring cup and spoon included
- 470mm(D) x 360mm(H)



80407 6Ltr 5RSW6000 **1** £254.17

Rice Warmer



- 0.09kW power
- 9.6Ltr capacity
- Non stick coated rice bowl
- Steam drainage system with catchment for emptying
- Ideal for keeping large volumes of rice warm
- 430mm(D) x 425mm(H)



80406 9.6Ltr 5RSW9600 **1** £173.33

For more information
visit our website
www.greysimmonds.co.uk



WAREWASHING

REFRIGERATION

PREPARATION

COOKING APPLIANCES

BEVERAGE

HEATED DISPLAY

CHILLED DISPLAY

FLY KILLERS

ASIAN COOKLINE

Soup Kettles

Soup Kettle Black



- 10ltr capacity
- 400-475W¥Includes food/ soup labels
- 350mm(W) x 390mm(D) x 215mm(H)



34225 SB6000-K **1** £64.00

Soup Kettle S/Steel

Dualit.

- 6ltr capacity
- 0.3kW power
- Variable heat control
- 360mm(H) x 255mm(Dia)



32309 6ltr S/Steel **1** £79.50

Soup Kettle Black

Dualit.

- 10ltr capacity
- 0.46kW power
- Ideal for front of house service
- 340mm(H) x 340mm(Dia)



30714 10ltr Black **1** £85.10

Vac Pac Machines

Table Top Chamber Machine



- 1.2kW power - C100, 2kW - C200
- Ideal for vacuum sealing meat, poultry, fish, vegetables and foods with high liquid content
- Accurate setting of desired sealing time
- Heavy duty construction
- 400mm(W) x 500mm(D) x 330mm(H) - C100
- 570mm(W) x 525mm(D) x 370mm(H) - C200



75009 Vac Pac C100 **1** £2,499.00

50868 Vac Pac C200 **1** £3,099.00

Vac-Star Easy Vacuum Sealer



- Designed for packaging meats, vegetables and hard cheeses
- 320mm sealing bar; 50 mbar
- 20ltr per minute pump
- 415mm(W) x 300mm(D) x 127mm(H)



80430

Vac-Star SVT-EASY **1** £300.00

Polyscience Chamber Vacuum



- Designed for packaging meats, vegetables, hard cheeses and liquids
- 300mm sealing bar
- Stainless steel housing
- 350mm(W) x 450mm(D) x 250mm(H)



10860

Polyscience SVT-PSVACPAC-300

1 £849.00

Foodtek Cucina



- Designed for packaging meats, vegetables, hard cheeses and liquids
- Sealing bar length 300mm or 400mm
- AISI 304 stainless steel housing
- 370mm(W) x 530mm(D) x 250mm(H) - 300
- 470mm(W) x 550mm(D) x 450mm(H) - 400



10861 Foodtek SVT-CUCINA-300 **1** £1,319.00

80433 Foodtek SVT-CUCINA-400 **1** £1,719.00

Thermal Circulators

Vac-Star Thermal Circulator



- Turns any cooking vessel or container into a sous vide bath in seconds
- Works best up to a maximum capacity of 40ltrs
- Working temperature 20°C to 100°C
- Bright LED working temperature display
- 100mm(W) x 160mm(D) x 360mm(H)



80434

Vac-Star SVT-CHEF

1 £329.00

Polyscience Professional Thermal Circulator



- Its aesthetics, easy handling and flexibility are unique
- Works best up to a maximum capacity of 45ltrs
- Working temperature 20°C to 100°C
- Branded carry case included
- 98mm(W) x 187mm(D) x 359mm(H)



80435

Polyscience SVT-SVPR

1 £499.00

Stirred Heater Including Cage



- Can be fitted to virtually any cooking vessel
- Works best up to a maximum capacity of 50ltrs
- Temperature up to 95°C
- Height above vessel 200mm, 150mm below
- 140mm(W) x 220mm(D) x 350mm(H)



99275

Stirred Heater SV200

1 £595.00

Sous Vide Baths

Sous Vide Bath Expert Range



- 0.7kW power - 5 and 12Ltr, 1.4kW - 26Ltr
- Insulated tanks
- Three programmable temperature presets
- Countdown timer with buzzer
- 335mm(W) x 230mm(L) x 220mm(H) - 5ltr
- 335mm(W) x 430mm(L) x 240mm(H) - 12Ltr
- 325mm(W) x 585mm(L) x 275mm(H) - 26Ltr



99274 5 Ltr Expert SVE5 **1** £499.00

33163 12 Ltr Expert SVE12 **1** £525.00

33164 26 Ltr Expert SVE26 **1** £619.00

Sous Vide Water Bath



- 1kW power - 14Ltr, 1.5kW - 28Ltr
- Sleek all in one design
- Digital LED display
- Precise temperature control to 0.1°C
- PID temperature control
- 350mm(W) x 355mm(D) x 315mm(H) - 14Ltr
- 555mm(W) x 355mm(D) x 315mm(H) - 28Ltr



80504 14 Ltr SVT-FT14T **1** £449.00

80505 28 Ltr SVT-FT28T **1** £499.00

Sous Vide Water Bath Stirred



- 2kW power
- Constantly circulates water
- High precision with temperature control
- Bright LED display
- Working temperature 20°C -100°C
- 355mm(W) x 560mm(D) x 500mm(H) - 28Ltr
- 680mm(W) x 560mm(D) x 500mm(H) - 45Ltr



80506 28 Ltr SVT-28STIRRED **1** £829.00

80507 45 Ltr SVT-45STIRRED **1** £929.00

WAREWASHING

REFRIGERATION

PREPARATION

COOKING APPLIANCES

BEVERAGE

HEATED DISPLAY

CHILLED DISPLAY

FLY KILLERS

ASIAN COOKLINE

Pizza Ovens



Pizza Oven Twin Deck

Lincat

- 6kW power - PO425-2, 8.4kW - PO430-2, 14.4kW - PO630-2
- Separate heat controls for top and base
- Available with optional stand
- 886mm(W) x 902mm(D) x 675mm(H) - 6kw
- 966mm(W) x 1002mm(D) x 675mm(H) - 8.4kw
- 1286mm(W) x 1002mm(D) x 675mm(H) - 14.4kw



93098 6kw PO425-2	1	£1,569.33
93099 8.4kw PO430-2	1	£1,779.07
93100 14.4kw PO630-2	1	£2,190.47



Cuppone Michelangelo Electric Twin Deck



- 15.8kW single or three phase
- Pizza capacity - 12 x 300mm in pans
- Also available in other sizes
- Features digital control panel with up to 100 programmes
- Stylish appearance, perfect for Front of House
- 1550mm(W) x 1100mm(D) x 780mm(H)



10497 Michelangelo LLKML6352L	1	£6,065.00
80413 Stand	1	£699.00

Cuppone Donatello Electric Twin Deck



- 15.6kW single or three phase
- Pizza capacity - 12 x 300mm in pans
- Also available in other sizes
- Has a revolutionary heat regeneration system
- Can be supplied with a stand and hood
- 1155mm(W) x 1360mm(D) x 784mm(H)



10670 Donatello LLKDN6352	1	£3,359.00
80399 Stand	1	£479.00



Cuppone Single Deck Gas Oven



- Pizza capacity - 4 x 12" pizzas in pans or on base
- Supplied as single deck but can be stacked
- 1060mm(W) x 970mm(D) x 500mm(H)



14013 Gas LLK5G	1	£3,059.00
65314 LPG Gas LLK5G	1	£3,059.00
80414 Stand	1	£409.00

Pizza Oven Small Single and Twin Deck



- 4.5kW power - Single, 9kW Twin
- Fits 4 33cm pizzas per oven
- Mirror finish s/steel front
- Thermostatically controlled up to 450°C
- Independently controlled top and bottom heating elements
- 910mm(W) x 840mm(D) x 430mm(H) - Single
- 910mm(W) x 840mm(D) x 700mm(H) - Twin



14007 Single Deck TKA1	1	£859.00
65196 Twin Deck TKA2	1	£1,319.00
10917 S/Steel Stand SKA	1	£349.00

*Height with stand - 1230mm or 1500mm

Pizza Oven Large Single and Twin Deck



- 6.5kW power - single, 13kW - twin
- Fits 6 33cm pizzas per oven
- Mirror finish s/steel front
- Thermostatically controlled up to 450°C
- Independently controlled top and bottom heating elements
- 1250mm(W) x 940mm(D) x 430mm(H) - Single
- 1250mm(W) x 940mm(D) x 700mm(H) - Twin



65153 Single Deck TKD1	1	£1,005.00
51231 Twin Deck TKD2	1	£1,699.00
65154 S/Steel Stand SKD	1	£369.00

Conveyor Oven Gas and Electric



- 17kW power - electric
- Mirror finish s/steel front
- S/steel exterior and interior
- 18" s/steel wire mesh conveyor belt
- Two single inlet blowers behind the heat source for air circulation
- 1537mm(W) x 1092mm(D)



10973 BG36 Gas	1	£8,299.00
80482 BE36 Electric	1	£9,800.00

For best prices call our sales team on
0845 130 9070

WAREWASHING

REFRIGERATION

PREPARATION

COOKING APPLIANCES

BEVERAGE

HEATED DISPLAY

CHILLED DISPLAY

FLY KILLERS

ASIAN COOKLINE

Toasters

Conveyor Toaster

Lincat

- 2.4kW power
- 2 slice feed, up to 340 slices per hour
- Individually controlled heating elements for one-sided toasting
- High output from compact unit
- 410mm(W) x 668mm(D) x 398mm(H)



51082 Conveyor Toaster CT1 **1** £614.53

Conveyor Toaster

Dualit.

- 2.8kW power
- 2 slices wide
- Output 360 slices per hour
- Saves up to 20% on energy consumption
- 370mm(W) x 640mm(D) x 400mm(H)



38498 2 Slice DCT2T **1** £630.00

Conveyor Toaster

Dualit.

- 4.1kW power
- High capacity, 3 slices wide
- Output 500 slices per hour
- Power saver switch saves up to 75% power consumption in stand by mode
- 470mm(W) x 640mm(D) x 400mm(H)



10970 3 Slice DCT3 **1** £700.00

Four and Six Slot Toasters

Lincat

- 2.3kW power - 4 Slot, 3.1kW - 6 Slot
- Unique scissor lifting mechanism which raises and lowers bread
- 4 position slot selector
- 360mm(W) x 220mm(D) x 240mm(H) - 4
- 450mm(W) x 220mm(D) x 240mm(H) - 6



30048 4 Slot Toaster LT4X **1** £144.47

30070 6 Slot Toaster LT6X **1** £178.93

Classic Toaster Polished

Dualit.

- 1.5kW power - 2 Slot, 1.7kW power - 3 Slot, 2.2kW power - 4 Slot, 3kW power - 6 Slot,
- Adjustable inner wire guard to grip toast
- S/Steel wrap & aluminium castings
- 260mm(W) x 210mm(D) x 220mm(H) - 2
- 310mm(W) x 210mm(D) x 220mm(H) - 3
- 360mm(W) x 210mm(D) x 220mm(H) - 4
- 460mm(W) x 210mm(D) x 220mm(H) - 6



49403 2 Slot **1** £124.58

30763 3 Slot **1** £153.19

30727 4 Slot **1** £165.96

32468 6 Slot **1** £204.26

Classic Toaster White

Dualit.

- 1.5kW power - 2 Slot, 1.7kW power - 3 Slot, 2.2kW power - 4 Slot, 3kW power - 6 Slot,
- Adjustable inner wire guard to grip toast
- S/Steel wrap & aluminium castings
- 260mm(W) x 210mm(D) x 220mm(H) - 2
- 310mm(W) x 210mm(D) x 220mm(H) - 3
- 360mm(W) x 210mm(D) x 220mm(H) - 4
- 460mm(W) x 210mm(D) x 220mm(H) - 6



49404 2 Slot **1** £124.58

49409 3 Slot **1** £144.96

30713 4 Slot **1** £158.29

30758 6 Slot **1** £182.98

Classic Toaster Black

Dualit.

- 1.5kW power - 2 Slot, 1.7kW power - 3 Slot, 2.2kW power - 4 Slot, 3kW power - 6 Slot,
- Adjustable inner wire guard to grip toast
- S/Steel wrap & aluminium castings
- 260mm(W) x 210mm(D) x 220mm(H) - 2
- 310mm(W) x 210mm(D) x 220mm(H) - 3
- 360mm(W) x 210mm(D) x 220mm(H) - 4
- 460mm(W) x 210mm(D) x 220mm(H) - 6



49405 2 Slot **1** £124.58

49408 3 Slot **1** £144.96

30840 4 Slot **1** £158.29

30838 6 Slot **1** £182.98



WAREWASHING

REFRIGERATION

PREPARATION

COOKING APPLIANCES

BEVERAGE

HEATED DISPLAY

CHILLED DISPLAY

FLY KILLERS

ASIAN COOKLINE

Toasters

Classic Toaster Grey

Dualit

- 1.5kW power - 2 Slot, 1.7kW power - 3 Slot, 2.2kW power - 4 Slot, 3kW power - 6 Slot.
- Adjustable inner wire guard to grip toast
- S/Steel wrap & aluminium castings
- 260mm(W) x 210mm(D) x 220mm(H) - 2
- 310mm(W) x 210mm(D) x 220mm(H) - 3
- 360mm(W) x 210mm(D) x 220mm(H) - 4
- 460mm(W) x 210mm(D) x 220mm(H) - 6



49406 2 Slot **1** £124.58

49410 3 Slot **1** £144.96

49411 4 Slot **1** £158.29

Contact Toastie

Dualit

- 1.6kW power
- 1/2 Slice Capacity
- Teflon Coated Plates
- Toasts, seals and divides sandwiches
- 400mm(W) x 220mm(D) x 190mm(H)



32240 Toastie 73002 **1** £199.00

For more information visit our website
www.greysimmonds.co.uk

Microwaves

Daewoo Microwaves



- Available in 1.1, 1.5 or 1.85kW power
- 27ltr capacity
- Dual emission top and bottom energy feed
- S/steel
- 542mm(W) x 461mm(D) x 329mm(H) - 1.1kW
- 465mm(W) x 563mm(D) x 370mm(H) - 1.5kW and 1.85kW



14010 1.1kw power KOM9M11S **1** £259.00

10625 1.5kw power KOM9F50 **1** £449.00

10478 1.85kw power KOM9F85 **1** £539.00

MenuMaster Heavy Duty Microwave



- 1.8kW power
- Durable and stackable
- Four stage cooking option for one touch cooking
- 11 power levels
- Unique method of energy distribution provides superior oven heating
- 425mm(W) x 578mm(D) x 343mm(H)



80508 1.8kw power DEC18E2 **1** £733.33

Merrychef Combination Microwave



- 3kW power
- Reduces cooking times by up to 6 times
- Oven controls allow multi stage programming
- Easy touch screen technology
- 598mm(W) x 622mm(D) x 551mm(H)



50818

MerryChef Combi E3EE

1 £2,330.00

Panasonic Touch Microwave



- 1.8kW power
- Programmable touch pads, 15 power levels
- Dual emission top and bottom energy feed
- S/steel body and cavity
- Programme lock to allow one touch operation
- 422mm(W) x 508mm(D) x 335mm(H)



80527 Panasonic NE1853 **1** £619.00

WAREWASHING

REFRIGERATION

PREPARATION

COOKING APPLIANCES

BEVERAGE

HEATED DISPLAY

CHILLED DISPLAY

FLY KILLERS

ASIAN COOKLINE

Induction Hobs

Electric OPUS 700

Lincat



- 3.5kW power per zone
- Available in two or four cooking zones
- Pan detection function cuts power when no pan is present
- 300mm(W) x 737mm(D) x 450mm(H) - 2 zones
- 600mm(W) x 737mm(D) x 450mm(H) - 4 zones



93066 2 zone OPUS OE7013 **1** £2,269.33

93067 4 zone OPUS OE7014 **1** £4,261.33

Table Top Induction Hob

Lincat



- 3kW power
- 2 Cooking zones
- Boost function delivers power when most needed
- Portable, plug in device, easy to move
- 350mm(W) x 654mm(D) x 115mm(H)



92002
Tabletop IH21

1 £649.73

Maestrowave Induction Hob

Maestrowave

- 2.8kW power
- Touchpad controls
- Auto pan detection cut-out
- Adjustable temperature 60-240°C
- 326mm(W) x 386mm(D) x 101mm(H)



51150
Maestrowave MC30L4B

1 £449.00

Induction Wok

SRMAN

- 3.5kW power
- Energy saving with heating efficiency
- No flame means safe operation
- Graduated digital controls
- 340mm(W) x 445mm(D) x 110mm(H)



10971
Induction Wok IND-35W

1 £381.07

Chip Scuttles

Electric SILVERLINK 600

Lincat

- 0.5kW power - CS4, 0.75kW - CS6
- Heated from below
- Removable tank and drain plate
- 450mm(W) x 600mm(D) x 265mm(H) - CS4
- 600mm(W) x 600mm(D) x 265mm(H) - CS7



51294 0.5kw SILVERLINK CS4 **1** £302.13

32409 0.75kw SILVERLINK CS6 **1** £352.73

Electric OPUS 700

Lincat

- 1.5kW power
- Heated from above and below
- Overhead heat lamp enhances presentation
- Includes 1/1 GN container
- 400mm(W) x 737mm(D) x 713mm(H)



38707A
OPUS OE7109

1 £738.00

Extraction/Fume Filtration

Fume Filtration - 3 Part Filtration

Lincat



- 0.45kW power
- Ideal for LYNX 400 and SILVERLINK 600 electric appliances
- Also available in a smaller size
- 690m3 volume of air filtered per hour
- Overheat protection system cuts power to fans in the event of an appliance fire
- 1295mm(W) x 610mm(D) x 545mm(H)



93056 Fume extraction unit L4 **1** £1,267.20

Smartvent Canopy Extraction

Lincat

- 0.12kW power
- Also available in 1600mm, 2000mm and 2400mm length
- Variable fan speed and choice of fan position
- Bright energy efficient LED lighting provided as standard
- 1200mm(W) x 1200mm(L) x 700mm(H)



80446
Smartvent SV1212

1 £1,447.60

WAREWASHING

REFRIGERATION

PREPARATION

COOKING APPLIANCES

BEVERAGE

HEATED DISPLAY

CHILLED DISPLAY

FLY KILLERS

ASIAN COOKLINE

Coffee Machines

Barista Espresso Coffee Machine Semi Automatic



- 2.85kW power - 13 amp, 4kW power - 20 amp
- All working surfaces s/steel
- Hot water font and steam arm
- Automatic filling
- Esspresspot option - if specified at time of order
- Black panels available if specified at time of order
- 580mm(W) x 500mm(D) x 485mm(H)



51169 Semi-Automatic MBC2P **1** £1,699.00

Barista Espresso Coffee Machine Fully Automatic



- 2.85kW power - 13 amp, 4kW power - 20 amp
- All working surfaces s/steel
- Hot water font and steam arm
- Automatic filling
- Esspresspot option - if specified at time of order
- Black panels available if specified at time of order
- 580mm(W) x 500mm(D) x 485mm(H)



51193 Fully Automatic MBC2D **1** £1,899.00

Bean to Cup Coffee Machines

Jura GIGA X8 Bean to Cup Machine



- 2.3kW Power
- 8 Programmable preparation buttons
- Approx. 40 servings in the coffee ground container
- 2 x 650g bean containers
- 320mm(W) x 497mm(D) x 565mm(H)



80436
Bean to Cup GIGA X8C
1 £3,522.00

Bravillor Espresso Bean to Cup Machine



- 2.2kW Power
- Choice of 1 or 2 canisters
- Collection of pre-programmed recipes
- 1 grinder - bean canister - 2 instant canisters
- Conveniently arranged touch screen
- 330mm(W) x 570mm(D) x 660mm(H)



80437
Esprecious 12
1 £3,153.00

Coffee Grinders

Barista Coffee Grinder/Dispenser



- Reliable and proven design for everyday use
- 1kg bean hopper capacity - produces approximately 120 espressos
- 210mm(W) x 310mm(D) x 610mm(H)



65162
Grinder BB010
1 £299.50

Barista Coffee Grinder/Dispenser



- Reliable and proven design for everyday use
- 1.7kg bean hopper capacity - 1kg produces approximately 120 espressos
- 210mm(W) x 360mm(D) x 630mm(H)



80369
Grinder BB020
1 £695.00

WAREWASHING

REFRIGERATION

PREPARATION

COOKING APPLIANCES

BEVERAGE

HEATED DISPLAY

CHILLED DISPLAY

FLY KILLERS

ASIAN COOKLINE

Accessories

Conical Frothing Jugs S/Steel

20526	330ml/12oz	1	£6.00
33764	600ml/20oz	1	£7.60
30462	900ml/32oz	1	£9.08
33762	1500ml/50oz	1	£12.12
33763	2000ml/70oz	1	£16.66



For best prices call our sales team on
0845 130 9070

Cleaning Powder



62113
Detergent
Q907153
1 £9.50



Coffee Machine Cappuccino Kit



50105
Cappuccino Kit
Q907010
1 £38.00



Coffee Machine Knock Out Drawer



23317
Knock Out Drawer
Q907001
1 £70.00



Foam Knife

33760 4"/10cm 1 £2.56



Scaleguard Water Treatment Kit



50104 Scaleguard Kit Q907200
1 £265.00
21097 Filter Cartridge Q907201
1 £179.00



Tea Strainer & Bowl S/Steel



34040 14cm 1 £2.46



The only place to go to fulfil your spares needs

Spares, components & consumables for:

- Warewashing – glass and dishwashers
- Cooking equipment
- Refrigeration and icemakers
- Water treatment and ancillary products
- Espresso coffee machines and grinders



www.caterparts.com

0845 130 8060

FREE CATALOGUE

‘Right part.
Right price.
Happy customer.
Thanks caterparts.’



REPLACEMENT PARTS FOR THE CATERING INDUSTRY FOR OVER YEARS

WAREWASHING

REFRIGERATION

PREPARATION

COOKING APPLIANCES

BEVERAGE

HEATED DISPLAY

CHILLED DISPLAY

FLY KILLERS

ASIAN COOKLINE

Automatic Water Boilers

Filter Flow Automatic Water Boilers

Lincat

- 3kW power - 31Ltrs, 4.5kW - 45Ltrs
- Available in 31 or 45ltrs output per hour
- Unique built-in filtration ensures premium water quality and reduced scale build-up
- Reliable electronic temperature control system
- 290mm(W) x 465mm(D) x 652mm(H)



40564 31 Ltr EB3F **1** £408.47
65049 45 Ltr EB4F **1** £484.00



Filter Flow Automatic Water Boiler Single and Two Tap

Lincat

- 6kW power
- 60ltrs of output per hour
- High hourly output - ideal for busy establishments
- Reliable electronic temperature control system
- 455mm(W) x 465mm(D) x 652mm(H)



40566 60 Ltr EB6F **1** £526.53
40567 60 Ltr 2 Tap EB6TF **1** £569.07



Filter Flow Wall Mounted Automatic Water Boilers

Lincat

- 3kW power
- Available in black or white
- Sleek cool to touch 8mm thick toughened glass fascia
- 31ltrs output per hour
- 300mm(W) x 185mm(D) x 415mm(H)



50987 Wall Mounted Black WMB3F/B **1** £391.60
51061 Wall Mounted White WMB3F/W **1** £391.60

Autofi II Filtration Water Boiler

BURCO

- 2.8kW power
- Available in 10 or 20ltrs
- 206 cups per hour
- Advanced touch screen LCD
- 10 language options available
- S/steel exterior
- 344mm(W) x 464mm(D) x 568mm(H) - 10Ltr
- 344mm(W) x 464mm(D) x 689mm(H) - 20Ltr



10449 10 Ltr Automatic AFCT10L **1** £329.00
10451 20 Ltr Automatic AFCT20L **1** £419.00

Autofi II Filtration Push Button Water Boiler

BURCO

- 2.8kW power
- 10Ltr Capacity
- 206 cups per hour
- Ideal for self serve locations
- Button controls water flow, water stops instantly when released
- S/steel exterior
- 344mm(W) x 464mm(D) x 568mm(H)



80453 10 Ltr Push AFCT10LPB **1** £349.00

Autofi II Filtration Wall Mounted Water Boiler

BURCO

- 2.8kW power
- 5Ltr Capacity
- 400 cups per hour
- Ideal for self serve locations
- Button controls water flow, water stops instantly when released
- S/steel exterior
- 344mm(W) x 279mm(D) x 497mm(H)



10939 5Ltr Wall Mounted MFC2T **1** £349.00

Manual Water Boilers

Manual Fill Water Boilers

Lincat

- 3kW power
- Available in 9, 18 or 27ltr capacity
- Mirror s/steel
- Simmerstat controlled
- 300mm(W) x 300mm(D) x 380mm(H) - 9Ltr
- 300mm(W) x 300mm(D) x 500mm(H) - 18Ltr
- 365mm(W) x 365mm(D) x 500mm(H) - 27Ltr

31196 9 Ltr LWB2 **1** £174.53
31197 18 Ltr LWB4 **1** £187.00
31198 27 Ltr LWB6 **1** £201.67



Automatic Water Boilers

Manual Fill Plug & Go Water Boilers

BURCO

- 1kW power
- Available in 10 or 20ltr capacity
- Unique patented tap design
- Flush lid handle with fingertip guard for extra safety
- 300mm(W) x 335mm(D) x 380mm(H) - 10Ltr
- 390mm(W) x 430mm(D) x 380mm(H) - 20Ltr

80543 10 Ltr Manual MFCT10ST **1** £106.00
80452 20 Ltr Manual MFCT20ST **1** £114.00



For more information
visit our website
www.greysimmonds.co.uk

WAREWASHING

REFRIGERATION

PREPARATION

COOKING APPLIANCES

BEVERAGE

HEATED DISPLAY

CHILLED DISPLAY

FLY KILLERS

ASIAN COOKLINE

Heated Displays with Gantry

Glo-Max Portable Food Warmer



- 0.5kW power
- Portable - ready to plug in and use
- Both bottom and top heat available
- 1 x 1/1 GN pan
- Steel plated aluminium
- Unit with lights, 2 bulbs
- 329mm(W) x 644mm(D) x 445mm(H)



80544
Glo-Max GMFFL
1 £154.00

Heated Displays with Gantry



- 1.5kW power - LD2, 2.4kW - LD3, 2.75kW - LD4
- Available to fit 2, 3 or 4 1/1 GN containers
- Thermostatic control allows base heat to be adjusted
- Overhead gantry with halogen heat lamps
- Toughened glass sneeze screen for hygiene and safety
- 790mm(W) x 500mm(D) x 562mm(H) - LD2
- 1130mm(W) x 500mm(D) x 562mm(H) - LD3
- 1470mm(W) x 500mm(D) x 562mm(H) - LD4



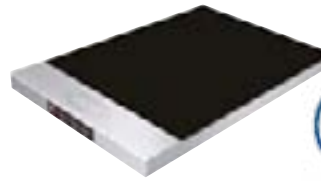
93057 2 x 1/1GN LD2 1 £390.13
50945 3 x 1/1GN LD3 1 £486.93
21297 4 x 1/1 GN LD4 1 £580.80

Portable Heated Shelf

Black Glass Modular Shelf



- 0.3kW power
- Five settings - 55°C, 65°C, 75°C, 85°C and 95°C
- 1 x 1/1 GN pan
- Black ceramic glass
- Uses modular system so units can be placed side by side
- Durable s/steel housing
- 400mm(W) x 600mm(D) x 58mm(H)



80410 Heated Shelf HGSM-4060 1 £261.00

Warming Drawers

Drawer Warmers



- 1kW power
- Digital electronic controller
- Insulated top, sides and back
- Tough, solid chrome handles
- Includes three full size pans
- 421mm(W) x 774mm(D) x 762mm(H)



10834
Drawer Warmers
CDW-3N
1 £2,495.00

Pie Cabinets

Pie Cabinet



- 0.75kW power
- Robust s/steel construction
- Manufactured from toughened glass
- Three chrome plated rod shelves with easy to remove supports
- 710mm(W) x 275mm(D) x 520mm(H)



93059 Pie Cabinet LPW 1 £324.87

Pie Cabinet with Light and Water Reservoir



- 0.8kW power
- Robust s/steel construction
- Manufactured from toughened glass
- Three chrome plated rod shelves with easy to remove supports
- Two 25 watt diffused switchable lights with user changeable bulbs
- Humidity feature to keep food in condition for longer
- 710mm(W) x 275mm(D) x 520mm(H)



31636 Pie Cabinet LPW/LR 1 £376.93

Hot Cupboards

Bains Marie Hot Cupboard



- 2.4kW power
- 4 x 100mm swivel castors, two braked
- Robust push/pull bar
- Digital temperature display
- Fully 1/1 GN compatible
- 1600mm(W) x 670mm(D) x 900mm(H)



10565
Bains Marie BM40MS
1 £1,665.00

Panther Light Duty Series Hot Cupboard



- 0.75kW power
- Adjustable thermostatic temperature control (30-90°C)
- Three shelf positions
- Side hinged doors (90° opening)
- Supplied with three shelves and adjustable feet
- 450mm(W) x 600mm(D) x 900mm(H)



51140
Panther Hot Cupboard PLH45
1 £426.80

WAREWASHING

REFRIGERATION

PREPARATION

COOKING APPLIANCES

BEVERAGE

HEATED DISPLAY

CHILLED DISPLAY

FLY KILLERS

ASIAN COOKLINE

Salad Bars

Hexagonal Salad Bar

Victor

- 1.5kW power
- Ideal centerpiece display
- One piece s/steel well
- Microprocessor based temperature control with auto defrost and condensate handling
- Four heavy duty castors
- Blown air well, operating temperature between 3°C and 5°C



80405

Hexagonal Salad

CARIB18 **1** call for price

Blown Air Salad Bar

Victor

- 1.6kW power
- A refrigerated well with a choice of six gantry styles
- Completely removable well
- Accepts 1/1 GN containers
- Self regulating condensate system
- 1206mm(W) x 700(D) x 900mm(H)



80462

Blown Air Salad CARIB72.412 **1** call for price

Chilled Preparation Units

Pizza, Salad or Sandwich Prep Unit Glass Structure Top

Divzard

- S/steel interior and exterior
- Accepts 1/3 GN containers up to 150mm deep (not supplied)
- Digital temperature display
- 1500mm(W) x 395mm(D) x 435mm(H) or 2000mm(W) x 395mm(D) x 435mm(H)



80404 1500mm Glass TOP1500CR **1** £419.00

10835 2000mm Glass TOP2000CR **1** £499.00

Pizza, Salad or Sandwich Prep Unit Hinged S/steel Lid

Divzard

- S/steel interior and exterior
- Accepts 1/3 GN containers up to 150mm deep (not supplied)
- Digital temperature display
- 1500mm(W) x 395mm(D) x 620mm(H) or 2000mm(W) x 395mm(D) x 620mm(H)



*Height with lid open

65073 1500mm S/Steel TOP1500EN **1** £419.00

80403 2000mm S/Steel TOP2000EN **1** £499.00

Fly Killers

Fly Zapper Exocutor

Victor

- 50M² coverage
- Also available in larger sizes
- 16 Watt power
- 2 x TPX8-12 tubes
- Designed to maximise useful UV light output
- Internal aluminium UV light reflectors
- Reliable high specification 3750V transformer
- 390mm(W) x 140mm(D) x 265mm(H)



23283 Exocutor EX16 **1** £109.00

Flyscreen Kit

Victor

- Available in larger sizes
- Quick and easy solution for windows in food preparation and service areas
- Tough aluminium frame with robust mitred corners
- Strong PVC coated mesh
- Can be fitted as fixed or hinged screen
- 650mm(W) x 950mm(H)



80441

Flyscreen Kit SCR0190

1 £99.00

Chain Doors

Victor

- Provides an effective barrier against flying insects
- Made of aluminium
- Giving non-rust durability



80442 Flyscreen Chain Doors Z324 **1** £114.00

Electric Teppanyaki

Electric Teppanyaki

MaxWeld

- 12.8kW power - TP 12/E, 15.3kW - TP 15/E
- High quality s/steel construction
- Hot plate made of high temperature resistant steel 20mm thick
- Integrated residues waste pan & safety handrail
- Also available in counter top version
- Storage compartment below with two sliding doors
- 1200mm(W) x 870mm(D) x 850mm(H) - TP 12/E
- 1440mm(W) x 870mm(D) x 850mm(H) - TP 15/E



- 80490** 1200mm TP 12/E **1** £2,889.00
80491 1440mm TP 15/E **1** £3,339.00

Portable Electric Teppanyaki

Portable Electric Teppanyaki

MaxWeld

- 2.8kW power - NETY 2.7, 5.6kW - NETY 5.4, 8.4kW - NETY 8.1
- S/steel casing
- Cooking plate of 15mm s/steel
- Fat splash protection 3 sides included
- 375mm(W) x 500mm(D) x 205mm(H) - NETY 2.7
- 580mm(W) x 500mm(D) x 205mm(H) - NETY 5.4
- 900mm(W) x 500mm(D) x 205mm(H) - NETY 8.1



- 80492** 375mm NETY 2.7 **1** £1,420.00
80493 580mm NETY 5.4 **1** £1,959.00
80494 900mm NETY 8.1 **1** £2,440.00

Gas Teppanyaki

Gas Teppanyaki

MaxWeld

- 11.5kW power - natural, 10kW - propane
- High quality s/steel construction
- Hot plate made of high temperature resistant steel 20mm thick
- Integrated residues waste pan & safety handrail
- Also available in counter top version
- Automatic ignition
- Storage compartment below with two sliding doors
- 1200mm(W) x 870mm(D) x 850mm(H) - TP 12/G
- 1440mm(W) x 870mm(D) x 850mm(H) - TP 15/G
- 1740mm(W) x 870mm(D) x 850mm(H) - TP 18/G



- 80487** 1200mm TP 12/G **1** £1,959.00
80488 1440mm TP 15/G **1** £2,220.00
80489 1740mm TP 18/G **1** £2,855.00

Gas Super Range

Gas Super Range

MaxWeld

- 11.5kW power - natural, 13kW propane
- Powerful, compact and suitable for various methods of cooking
- Equipped with removable wok rings and strong cast iron burners
- 900mm(W) x 600mm(D) x 850/950mm(H) - NGER 9-60
- 1500mm(W) x 600mm(D) x 850/950mm(H) - NGER 15-60
- 1300mm(W) x 600mm(D) x 850/1500mm(H) - NGER 13-70
- 2000mm(W) x 600mm(D) x 850/1500mm(H) - NGER 20-70



- 80495** 900mm NGER 9-60 **1** £1,545.00
80497 1300mm NGER 13-70 **1** £1,969.00
80496 1500mm NGER 15-60 **1** £2,065.00
80498 2000mm NGER 20-70 **1** £2,630.00

Gas Wok Range

Gas Wok Range

MaxWeld

- 18kW power
- Professional chinese cooking system, premier quality appliance
- High performance, high efficiency units
- 700mm(W) x 900mm(D) x 850/1200mm(H) - NGWR 7-90
- 900mm(W) x 900mm(D) x 850/1200mm(H) - NGWR 9-90
- 1600mm(W) x 900mm(D) x 850/1200mm(H) - NGWR 16-90



- 80499** 700mm NGWR 7-90 **1** £1,999.00
80500 900mm NGWR 9-90 **1** £2,649.00
80501 1600mm NGWR 16-90 **1** £4,299.00

Induction Wok

Induction Wok

MaxWeld

- 16kW power induction coil for high output ultra fast cooking
- Easy clean design
- Cabinet in s/steel SUS 304 execution
- Wok glass 400mm
- Orbital finished pressed top panel, 1.2mm thick
- 1100mm(W) x 900mm(D) x 800/1200mm(H)



- 80503** Induction NEWI 11-90 **1** £5,159.00

WAREWASHING

REFRIGERATION

PREPARATION

COOKING APPLIANCES

BEVERAGE

HEATED DISPLAY

CHILLED DISPLAY

FLY KILLERS

ASIAN COOKLINE



Sequel



Cortland
Silversmith



Drinique Daquiri



Copacabana



Genware S/Steel
Sundae Cups

NEW
products for
2016
call for details



Ombre Intro

See more new
product highlights
on pages 439 - 442

WAREWASHING

REFRIGERATION

PREPARATION

COOKING APPLIANCES

BEVERAGE

HEATED DISPLAY

CHILLED DISPLAY

FLY KILLERS

ASIAN COOKLINE